

Consulting
Engineers and
Scientists

**Quarterly Groundwater Monitoring Report
Second Quarter (Q2) 2017**

Sag Harbor Former MGP Site

Village of Sag Harbor
Suffolk County, Long Island, NY
Site ID No. 1-52-159

Submitted to:

National Grid
175 East Old Country Road
Hicksville, NY 11801

Submitted by:

GEI Consultants, Inc., P. C.
110 Walt Whitman Road
Huntington Station, NY 11746
631.760.9300

August 2017
093190-2-1203

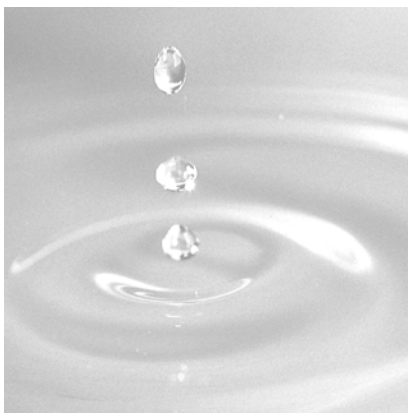


Table of Contents

1. Sag Harbor Site and Adjacent Offsite Areas	1
1.1 Monitoring Program	1
1.2 Monitoring Well Network	2
1.3 Hydrological Data	2
1.4 NAPL Thickness Data	2
1.5 Chemical Data	3
1.6 Data Trend Analysis	3
1.7 DNAPL Occurrence	4
1.8 Future Plans	4

Tables

1	Water Level Measurements and Calculated Groundwater Elevations
2	Summary of Historical NAPL Observations
3	Summary of BTEX, MTBE, and PAH Results
4	Summary of Historical Total BTEX Results
5	Summary of Historical Total PAH Results

Figures

1	Site Location Map
2	Monitoring Well Location Map
3	Shallow Groundwater Contours – High Tide
4	Shallow Groundwater Contours – Low Tide
5	Intermediate Groundwater Contours – High Tide
6	Intermediate Groundwater Contours – Low Tide

H:\WPROC\Project\NationalGrid\Sag Harbor\Groundwater Monitoring\Qtrly Repts\2017\Q2-2017\FINAL\Sag Harbor Q2 2017 Quarterly Groundwater Monitoring Report.docx

1. Sag Harbor Site and Adjacent Offsite Areas

Second Quarter (Q2) 2017 Groundwater Monitoring Event Summary

Event Date: May 15 and 16, 2017

Site Phase: Quarterly groundwater monitoring

Location: The location of the Sag Harbor Former MGP site is depicted on **Figure 1**.

1.1 Monitoring Program

Criteria to reduce the scope of the groundwater monitoring program based on historical and future analytical results were proposed, and subsequently approved by the New York State Department of Environmental Conservation (NYSDEC) on March 21, 2014. The criteria and the resulting reductions to the program were detailed in a follow-up letter to NYSDEC dated May 13, 2014. NYSDEC has required that several monitoring wells in the intermediate zone be exempt from reduction criteria and be sampled annually. These wells include SHMW-03I, SHMW-05I, and SHMW-08I.

Based on the established criteria, 10 wells were eliminated from the sampling program and three shallow wells were reduced to annual sampling and quarterly sampling has resumed in one well. The reductions in the scope of work are shown in the table below. The sampling list will continue to be re-evaluated on a quarterly basis, with changes made, as appropriate.

Monitoring Well	Sampling Frequency		Monitoring Well	Sampling Frequency	
	Former	Current		Former	Current
SHMW-01SR	Quarterly	Annual	SHMW-01D	Annual	Eliminated
SHMW-02S	Quarterly	Annual	SHMW-02DR	Annual	Eliminated
SHMW-03S	Quarterly	Annual	SHMW-07IR	Annual	Eliminated
SHMW-09I	Annual	Quarterly	SHMW-10I	Annual	Eliminated
SHMW-10S	Quarterly	Eliminated	SHMW-11I	Annual	Eliminated
SHMW-13S	Quarterly	Eliminated	SHMW-12I	Annual	Eliminated
SHMW-01IR	Annual	Eliminated	SHMW-13I	Annual	Eliminated

Notes. 1: SHMW-03I, 05IR, and 08I are exempt from reduction from annual sampling

Implementation of the reduced sampling scope began in Q2 2014. Based on a review of seasonal data trends, the annual sampling rounds are to be conducted during the third quarter of each year. Seven wells were included in the Q1 2017 quarterly sampling list.

1.2 Monitoring Well Network

A total of 25 monitoring wells are currently located at or in the vicinity of the site (**Figure 2**). MW-05 was destroyed sometime between March and June 2007. Monitoring wells MW-01, MW-02, MW-03, MW-04, MW-06, SHMW-01S, SHMW-01I, SHMW-02I, SHMW-02D, SHMW-04S, SHMW-04I, SHMW-05S, SHMW-05I, SHMW-06S, and SHMW-06I were abandoned prior to the Q4 2008 sampling event due to the remediation activities being conducted at the site. Seven of the monitoring wells, including SHMW-01SR, SHMW-01IR, SHMW-02IR, SHMW-02DR, SHMW-04SR, SHMW-05SR, and SHMW-05IR, were replaced as part of the post-remediation monitoring well replacement/installation program in Q4 2010.

Monitoring wells SHMW-02IR and SHMW-04SR were installed as larger diameter wells for potential dense non-aqueous phase liquid (DNAPL) recovery. In addition to the installation of the replacement monitoring wells listed above, new monitoring wells SHMW-01D and SHMW-02S were also installed as part of this program. Monitoring wells SHMW-07S and SHMW-07I, which were damaged presumably during the remedial activities, were abandoned during the replacement well installation program and reinstalled.

1.3 Hydrological Data

Groundwater levels were measured on May 15, 2017 at all 25 of the monitoring wells, during low and high tides. Monitoring well SHMW-02IR was repaired during Q3 2011, altering the survey point. As a result, the groundwater level measurement was not calculated. Depth to groundwater measurements and calculated groundwater elevations are provided in **Table 1**. Shallow and intermediate groundwater contours for high and low tidal conditions are depicted on **Figures 3** through **6**.

The groundwater flow direction was generally to the west towards Sag Harbor Cove. The ranges in depth to water and water table elevation data, as well as calculated hydraulic gradients for the shallow and intermediate portions of the aquifer in Q2 2017, are provided in the following table:

Depth Zone	High Tide			Low Tide		
	Range		Gradient ³	Range		Gradient ³
	DTW ¹	WLE ²		DTW ¹	WLE ²	
Shallow	0.01 – 4.01	1.08 – 3.68	0.0051	0.01 – 4.35	0.12 – 3.61	0.0020
Intermediate	0.01 – 4.53	1.10 – 2.91	0.0013	0.01 – 5.41	0.22 – 2.27	-0.0023

Notes:

- ¹: Depth to water - Measured as feet below top of casing
- ²: Water level elevation - Calculated as feet above mean sea level
- ³: Feet/Feet

1.4 NAPL Thickness Data

Table 2 provides a summary of historical non-aqueous phase liquid (NAPL) data. In Q2 2017, all 25 monitoring wells were monitored for NAPL as part of the groundwater monitoring program. Evidence of light non-aqueous phase liquid (LNAPL) or DNAPL in the

monitoring wells during Q2 2017 was limited to approximately one foot of DNAPL in SHMW-02IR.

1.5 Chemical Data

In Q2 2017, a total of six wells were sampled for benzene, toluene, ethylbenzene, total xylenes (BTEX), and methyl tert-butyl ether (MTBE) by Environmental Protection Agency (EPA) Method 8260, as well as polycyclic aromatic hydrocarbons (PAHs) by EPA Method 8270. Well sampling was performed on May 16, 2017 and included all the wells on the quarterly sampling list excluding SHMW-02IR and SHMW-07SR which were not sampled due to the presence of NAPL.

Chemical data for Q2 2017 (**Table 3**) indicate:

- Total BTEX concentrations in the six wells ranged from non-detect (ND) in SHMW-09I to 531.4 micrograms per liter (µg/L) in SHMW-12S.
- Total PAH concentrations ranged from ND in SHMW-09I to 532 µg/L in SHMW-12S.
- MTBE was detected in two of the six wells sampled. SHMW-08S had a concentration of 4.5 µg/L and SHMW-12S had an estimated concentration of 0.8 µg/L.

1.6 Data Trend Analysis

Total BTEX and total PAH concentrations (see historical data in **Tables 4** and **5**) have been generally decreasing, but variable in shallow groundwater on and adjacent to the site. Q2 2017 concentrations remained generally similar to Q1 2017. Further discussion of the decreases is provided below. An analysis of the current and historical data in recent quarterly sampling events is presented in the table below.

Shallow Zone	Historical		Q4 2016		Q1 2017		Q2 2017	
	Max	Average	Max	Average	Max	Average	Max	Average
Total BTEX	25,860	757	1,047	155	329	92	531	144
Total PAHs	14,332	658	2,286	349	361	173	532	146

Note:

Concentrations in µg/L

Concentrations of total BTEX and total PAHs were below detection levels in one of the six monitoring wells, SHMW-09I (ND), sampled during Q2 2017.

Elevated total BTEX concentrations were identified in three of the remaining shallow wells in Q2 2017, including SHMW-04SR (303 µg/L), SHMW-09S (18.5 µg/L), and SHMW-12S (531.4 µg/L). The total BTEX concentrations in SHMW-05SR (4.8 µg/L) and SHMW-08S (3.36 µg/L) were relatively low; however, the concentration of benzene exceeded the groundwater standard in each well. Excluding SHMW-12S, total BTEX concentrations in these wells during Q2 2017 were generally similar to Q1 2017 and were either at, or below their respective historical mean. The Q2 2017 total BTEX concentration in SHMW-12S increased relative to recent sampling events, but remained within its historical concentration range.

Elevated total PAH concentrations were identified in all five shallow wells sampled in Q2 2017, including SHMW-04SR (170.3 µg/L), SHMW-05SR (107.49 µg/L), SHMW-08S (28 µg/L), SHMW-09S (36.8 µg/L) and SHMW-12S (532 µg/L). Similar to total BTEX concentrations, the concentrations of total PAHs in Q2 2017 were similar to previous sampling events excluding SHMW-12S. The Q2 2017 total PAH concentration in SHMW-12S was within its historical concentration range.

1.7 DNAPL Occurrence

The historical NAPL data (**Table 2**) indicates that measurable quantities of NAPL have primarily been found in two onsite shallow monitoring wells (MW-02 and MW-05), one onsite intermediate well (SHMW-02I), and one offsite shallow well (SHMW-04S). Non-measurable (trace) amounts of NAPL have historically been found in two onsite shallow wells, MW-03 and MW-04, as well as in offsite shallow well SHMW-06S, and was intermittently found in SHMW-07S. All of the wells identified above in which NAPL has been historically detected were either destroyed or abandoned prior to, or during, remedial activities.

No measurable amounts of LNAPL and DNAPL had been observed in replacement monitoring wells SHMW-04SR and SHMW-07SR prior to recent gauging events. In recent events, DNAPL has been measured at a maximum thickness of approximately 0.13 feet in SHMW-04SR and a maximum thickness of approximately 0.17 feet in SHMW-07SR. During Q2 2017, no DNAPL was observed in SHMW-04SR. Blebs of DNAPL were observed in SHMW-07SR.

To date, no significant evidence of NAPL has been found in these monitoring wells or any of the remaining monitoring wells post remediation, excluding SHMW-02IR. The DNAPL thickness in SHMW-02I was approximately 4 feet immediately prior to abandonment during the Q3 2008 monitoring event. SHMW-02IR was installed as a larger diameter well for potential DNAPL recovery.

During Q2 2017, approximately one foot of DNAPL was present in SHMW-02IR. During October 2015, approximately one gallon of product was removed from SHMW-02IR. Prior to Q2 2017, subsequent gauging events demonstrated minimal rebound in DNAPL thickness. Approximately one gallon of DNAPL was recovered in SHMW-02IR in Q2 2017.

1.8 Future Plans

- Continue quarterly groundwater and NAPL monitoring at onsite and offsite monitoring wells.
- Attempt to recover DNAPL from SHMW-02IR, if the measured DNAPL thickness is greater than approximately 0.33 feet.

Tables

Table 1. Water Level Measurements and Calculated Groundwater Elevations
Sag Harbor Former MGP Site
Groundwater Monitoring Program - Q2 2017

Well ID	Top of Casing Elevation (ft)*	Tide	Time	5/15/2017		Notes
				Depth to Water (ft)	Groundwater Elevation (ft)	
SHMW-01SR	3.71	High	14:23	2.25	2.22	Well replaced in Q4 2010
		Low	8:11	2.20	1.51	
SHMW-01IR	3.81	High	14:22	0.90	2.91	Well replaced in Q4 2010
		Low	8:09	2.11	1.70	
SHMW-01D	3.67	High	14:23	1.19	2.48	Well installed in Q4 2010
		Low	8:11	1.99	1.68	
SHMW-02S	3.95	High	14:18	1.30	2.65	Well installed in Q4 2010
		Low	8:05	1.41	2.54	
SHMW-02IR	3.92	High	NM	NM	NC	Survey point altered
		Low	NM	NM	NC	
SHMW-02DR	3.66	High	14:18	1.61	2.05	Well replaced in Q4 2010
		Low	8:05	2.60	1.06	
SHMW-03S	3.83	High	14:30	2.59	1.24	
		Low	8:19	3.71	0.12	
SHMW-03I	3.85	High	14:30	1.71	2.14	
		Low	8:18	2.31	1.54	
SHMW-04SR	3.90	High	14:25	2.48	1.42	Well replaced in Q4 2010
		Low	8:13	2.41	1.49	
SHMW-05SR	5.03	High	14:27	2.92	2.11	Well replaced in Q4 2010
		Low	8:15	3.11	1.92	
SHMW-05IR	4.96	High	14:27	3.01	1.95	Well replaced in Q4 2010
		Low	8:16	3.31	1.65	
SHMW-07SR	3.48	High	14:42	0.07	3.41	
		Low	8:38	0.01	3.47	
SHMW-07IR	3.38	High	14:42	1.06	2.32	
		Low	8:38	1.21	2.17	
SHMW-08S	3.69	High	14:44	0.01	3.68	
		Low	8:40	0.08	3.61	
SHMW-08I	3.79	High	14:45	1.39	2.40	
		Low	8:41	2.71	1.08	
SHMW-09S	3.06	High	14:39	0.72	2.34	
		Low	8:32	0.71	2.35	
SHMW-09I	2.82	High	14:38	0.98	1.84	
		Low	8:30	1.22	1.60	
SHMW-10S	4.75	High	14:32	3.67	1.08	
		Low	8:21	2.17	2.58	
SHMW-10I	4.75	High	14:33	3.03	1.72	
		Low	8:21	2.48	2.27	
SHMW-11S	5.32	High	14:55	4.01	1.31	
		Low	8:24	4.35	0.97	
SHMW-11I	5.63	High	14:54	4.53	1.10	
		Low	8:23	5.41	0.22	
SHMW-12S	1.98	High	14:40	0.01	1.97	
		Low	8:34	0.01	1.97	
SHMW-12I	1.99	High	14:40	0.01	1.98	Artesian
		Low	8:35	0.01	1.98	
SHMW-13S	3.36	High	14:47	0.09	3.27	
		Low	8:43	0.02	3.34	
SHMW-13I	3.50	High	14:46	0.90	2.60	
		Low	8:42	1.41	2.09	

General Notes:

* Elevations were re-surveyed in November 2010.

NM = Not Measured

NC = Not Calculated

Table 2. Summary of Historical NAPL Observations
Sag Harber Former MGP Site
Groundwater Monitoring Program - Q2 2017

Well ID	May 2002 Observations	May 2004 Observations	Aug 2004 Observations	Oct 2004 Observations	Nov 2004 Observations	Dec 2004 Observations	Jan 2005 Observations	Feb 2005 Observations	Mar 2005 Observations
MW-01	None Observed	Odor	None Observed	Not Checked	NR	NR	NR	NR	NR
MW-02	Approx. 0.16' of DNAPL, sheen on surface	Approx. 0.15' of DNAPL, sheen on surface	Approx. 0.29' of DNAPL	Approx. 0.2' of DNAPL	Approx. 0.01' of DNAPL, 1.0' intermittent DNAPL	Approx. 0.1' of DNAPL	Approx. 0.11' of DNAPL	Approx. 0.16' of DNAPL	Approx. 0.15' of DNAPL
MW-03	Intermittent DNAPL for 1.5'	Approx. 0.03' of DNAPL, naphthalene-like odor	NR	Trace DNAPL at bottom of tape	Trace DNAPL at bottom of tape	Trace DNAPL at bottom of tape	Trace DNAPL at bottom of tape	Trace DNAPL at bottom of tape	Trace DNAPL at bottom of tape
MW-04	None Observed	Approx. 0.02' of DNAPL, naphthalene-like odor	NR	Trace DNAPL at bottom of tape	None Observed	None Observed	Trace DNAPL at bottom of tape	Not Checked (under snow pile)	None Observed
MW-05	Blebs of LNAPL	Approx. 1.0' of DNAPL, naphthalene-like odor	Approx. 0.75' of DNAPL	Approx. 4.5' of LNAPL/NAPL	Approx. 0.35' of DNAPL, 3.6' intermittent DNAPL	Trace DNAPL at bottom of tape, bubbles in WC	Trace DNAPL at bottom of tape	Approx. 0.6' of DNAPL, approx. 0.02' of LNAPL	Sporadic DNAPL, approx. 0.1' of LNAPL.
MW-06	None Observed	Slight naphthalene-like odor	NR	NR	NR	NR	NR	NR	NR
SHMW-01S/01SR	None Observed	Slight naphthalene-like odor	NR	NR	NR	NR	NR	NR	NR
SHMW-01I/01IR	None Observed	None Observed	NR	NR	NR	NR	NR	NR	NR
SHMW-01D	NI	NI	NI	NI	NI	NI	NI	NI	NI
SHMW-02S	NI	NI	NI	NI	NI	NI	NI	NI	NI
SHMW-02I/02IR	None Observed	Approx. 4.9' of DNAPL, sheen	Approx. 4.7' of DNAPL	Approx. 4.9' of DNAPL	Approx. 1.0' of DNAPL, 3.0' intermittent DNAPL	Approx. 0.6' of DNAPL	Approx. 0.65' of DNAPL	Approx. 0.5' of DNAPL	Approx. 0.45' of DNAPL
SHMW-02D/02DR	None Observed	None Observed	NR	NR	NR	NR	NR	NR	NR
SHMW-03S	None Observed	Odor	NR	NR	NR	NR	NR	NR	NR
SHMW-03I	None Observed	None Observed	NR	NR	NR	NR	NR	NR	NR
SHMW-04S/04SR	None Observed	Approx. 0.6' of DNAPL, naphthalene-like odor	NR	Approx. 0.7' of DNAPL, 2.3' intermittent DNAPL	Approx. 0.55' of DNAPL	Approx. 0.29' of DNAPL	Approx. 0.35' of DNAPL	Approx. 0.22' of DNAPL	Approx. 0.25' of DNAPL
SHMW-04I	None Observed	None Observed	NR	NR	NR	NR	NR	NR	NR
SHMW-05S/05SR	None Observed	Blebs of DNAPL in purge water, odor	NR	None Observed	None Observed	None Observed	None Observed	None Observed	None Observed

Table 2. Summary of Historical NAPL Observations
Sag Harbor Former MGP Site
Groundwater Monitoring Program - Q2 2017

Well ID	May 2002 Observations	May 2004 Observations	Aug 2004 Observations	Oct 2004 Observations	Nov 2004 Observations	Dec 2004 Observations	Jan 2005 Observations	Feb 2005 Observations	Mar 2005 Observations
SHMW-05I/05IR	None Observed	None Observed	NR	NR	NR	NR	NR	NR	NR
SHMW-06S	Slight sheen and naphthalene-like odor	Naphthalene-like odor	NR	NR	NR	NR	NR	NR	NR
SHMW-06I	None Observed	None Observed	NR	NR	NR	NR	NR	NR	NR
SHMW-07S/07SR	Sheen and naphthalene-like odor	Slight odor	NR	NR	NR	NR	NR	NR	NR
SHMW-07I/07IR	None Observed	None Observed	NR	NR	NR	NR	NR	NR	NR
SHMW-08S	None Observed	None Observed	NR	NR	NR	NR	NR	NR	NR
SHMW-08I	None Observed	None Observed	NR	NR	NR	NR	NR	NR	NR
SHMW-09S	None Observed	Slight naphthalene- like odor	NR	NR	NR	NR	NR	NR	NR
SHMW-09I	None Observed	None Observed	NR	NR	NR	NR	NR	NR	NR
SHMW-10S	None Observed	None Observed	NR	NR	NR	NR	NR	NR	NR
SHMW-10I	None Observed	None Observed	NR	NR	NR	NR	NR	NR	NR
SHMW-11S	None Observed	None Observed	NR	NR	NR	NR	NR	NR	NR
SHMW-11I	None Observed	None Observed	NR	NR	NR	NR	NR	NR	NR
SHMW-12S	None Observed	Sheen, strong sulfur- like odor	NR	NR	NR	NR	NR	NR	NR
SHMW-12I	None Observed	None Observed	NR	NR	NR	NR	NR	NR	NR
SHMW-13S	None Observed	None Observed	NR	NR	NR	NR	NR	NR	NR
SHMW-13I	None Observed	None Observed	NR	NR	NR	NR	NR	NR	NR

Table 2. Summary of Historical NAPL Observations
Sag Harber Former MGP Site
Groundwater Monitoring Program - Q2 2017

Well ID	Apr/Q1 2005 Observations	Jun/Q2 2005 Observations	Sep/Q3 2005 Observations	Dec/Q4 2005 Observations	Mar/Q1 2006 Observations	Jun/Q2 2006 Observations	Sep/Q3 2006 Observations	Dec/Q4 2006 Observations	Mar/Q1 2007 Observations
MW-01	NR	NR	NR	NR	NR	NR	NR	NR	NR
MW-02	Approx. 0.15' of DNAPL	Trace DNAPL at bottom of tape	Approx. 0.13' of DNAPL	Approx. 0.09' DNAPL, naphthalene-like odor	Approx. 0.01' DNAPL	Approx. 0.12 ' of DNAPL	Approx. 0.15' DNAPL	Approx. 0.10' DNAPL	Approx.0.20' DNAPL
MW-03	Trace DNAPL at bottom of tape	Trace DNAPL at bottom of tape	Trace DNAPL at bottom of tape	None, naphthalene- like odor	No DNAPL observed	Trace DNAPL (coating on tubes)	Trace DNAPL (coating on tubes)	No DNAPL observed	Trace DNAPL (coating on tubes)
MW-04	None Observed	None Observed	Trace DNAPL at bottom of tape	Trace DNAPL at bottom of tape	Trace DNAPL	Trace DNAPL	Trace DNAPL (coating on tubes)	Trace DNAPL (coating on tubes)	Trace DNAPL (coating on tubes)
MW-05	Sporadic DNAPL, approx. 0.1' of LNAPL	Approx. 3.0' of DNAPL	Approx. 0.75' of DNAPL, approx. 0.12' of LNAPL	DNAPL blebs in purge H2O, 0.5' DNAPL coating on tubes	Approx. 0.15' of DNAPL, approx. 0.1' of LNAPL	Approx. 0.22' DNAPL; 0.05' of LNAPL	Approx. 0.55' DNAPL; 0.06' of LNAPL	Trace LNAPL; DNAPL in purge water (not measurable)	Trace LNAPL; DNAPL in purge water (not measurable)
MW-06	NR	NR	NR	NR	NR	NR	NR	NR	None Observed
SHMW-01S/01SR	NR	NR	NR	NR	NR	NR	NR	NR	None Observed
SHMW-01I/01IR	NR	NR	NR	NR	NR	NR	NR	NR	None Observed
SHMW-01D	NI	NI	NI	NI	NI	NI	NI	NI	NI
SHMW-02S	NI	NI	NI	NI	NI	NI	NI	NI	NI
SHMW-02I/02IR	Approx. 1.1' of DNAPL	Approx. 0.75' of DNAPL	Approx. 0.4' of DNAPL	Approx. 1.3' of DNAPL, naphthalene- like odor	Approx. 0.35' of DNAPL	Approx. 0.43' of DNAPL	Approx. 0.5' of DNAPL	Trace DNAPL (coating on tubes)	Trace DNAPL (coating on tubes)
SHMW-02D/02DR	NR	NR	NR	NR	NR	NR	NR	NR	None Observed
SHMW-03S	NR	NR	NR	NR	NR	NR	NR	NR	None Observed
SHMW-03I	NR	NR	NR	NR	NR	NR	NR	NR	None Observed
SHMW-04S/04SR	Approx. 0.25' of DNAPL	Approx. 0.90' of DNAPL	Approx. 0.26' of DNAPL	Approx. 0.5' DNAPL, naphthalene-like odor	Approx. 0.25' of DNAPL	Approx. 0.5' of DNAPL	Approx. 0.25' of DNAPL	Approx. 0.30' of DNAPL	Approx.0.40' DNAPL
SHMW-04I	NR	NR	NR	NR	NR	NR	NR	NR	None Observed
SHMW-05S/05SR	None Observed	None Observed	None Observed	None Observed	No DNAPL observed	None Observed	None Observed	None Observed	None Observed

Table 2. Summary of Historical NAPL Observations
Sag Harbor Former MGP Site
Groundwater Monitoring Program - Q2 2017

Well ID	Apr/Q1 2005 Observations	Jun/Q2 2005 Observations	Sep/Q3 2005 Observations	Dec/Q4 2005 Observations	Mar/Q1 2006 Observations	Jun/Q2 2006 Observations	Sep/Q3 2006 Observations	Dec/Q4 2006 Observations	Mar/Q1 2007 Observations
SHMW-05I/05IR	NR	NR	NR	NR	NR	NR	NR	NR	None Observed
SHMW-06S	NR	NR	Trace DNAPL at bottom of tape	Approx. 0.10' DNAPL, naphthalene-like odor	Trace DNAPL	Approx. 0.2' of DNAPL	Approx. 0.2' of DNAPL	Trace DNAPL (coating on tubes)	Trace DNAPL (coating on tubes)
SHMW-06I	NR	NR	NR	NR	NR	NR	NR	NR	None Observed
SHMW-07S/07SR	NR	NR	NR	NR	NR	NR	NR	NR	None Observed
SHMW-07I/07IR	NR	NR	NR	NR	NR	NR	NR	NR	None Observed
SHMW-08S	NR	NR	NR	NR	NR	NR	NR	NR	None Observed
SHMW-08I	NR	NR	NR	NR	NR	NR	NR	NR	None Observed
SHMW-09S	NR	NR	NR	NR	NR	NR	NR	NR	None Observed
SHMW-09I	NR	NR	NR	NR	NR	NR	NR	NR	None Observed
SHMW-10S	NR	NR	NR	NR	NR	NR	NR	NR	None Observed
SHMW-10I	NR	NR	NR	NR	NR	NR	NR	NR	None Observed
SHMW-11S	NR	NR	NR	NR	NR	NR	NR	NR	None Observed
SHMW-11I	NR	NR	NR	NR	NR	NR	NR	NR	None Observed
SHMW-12S	NR	NR	NR	NR	NR	NR	NR	NR	None Observed
SHMW-12I	NR	NR	NR	NR	NR	NR	NR	NR	None Observed
SHMW-13S	NR	NR	NR	NR	NR	NR	NR	NR	None Observed
SHMW-13I	NR	NR	NR	NR	NR	NR	NR	NR	None Observed

Table 2. Summary of Historical NAPL Observations
Sag Harbor Former MGP Site
Groundwater Monitoring Program - Q2 2017

Well ID	Jun/Q2 2007 Observations	Sep/Q3 2007 Observations	Dec/Q4 2007 Observations	Mar/Q1 2008 Observations	Jun/Q2 2008 Observations	Sep/Q3 2008 Observations	Dec/Q4 2008 Observations	Mar/Q1 2009 Observations	Jun/Q2 2009 Observations
MW-01	NR	NR	None Observed	None Observed	Trace DNAPL	Trace DNAPL (at bottom of tubing)	Well Inaccessible or Abandoned	Well Abandoned	Well Abandoned
MW-02	Approx. 0.07' DNAPL	Approx. 0.11' DNAPL	Approx. ~0.08'	Trace DNAPL	Moderate DNAPL; not measureable	Trace DNAPL	Well Inaccessible or Abandoned	Well Abandoned	Well Abandoned
MW-03	None Observed	Trace DNAPL (coating on tubes)	Trace	Trace DNAPL (On bottom 1.5' of tubes)	Trace DNAPL	Trace DNAPL (0.05' at bottom of tubing)	Well Inaccessible or Abandoned	Well Abandoned	Well Abandoned
MW-04	Trace DNAPL (coating on tubes)	Trace DNAPL (coating on tubes)	Approx. ~0.02'	NR	Trace DNAPL	Trace DNAPL (at bottom of tubing)	Well Inaccessible or Abandoned	Well Abandoned	Well Abandoned
MW-05	Well Destroyed	Well Destroyed	Well Destroyed	Well Destroyed	Well Destroyed	Well Destroyed	Well Destroyed	Well Destroyed	Well Destroyed
MW-06	NR	NR	None Observed	None Observed	None Observed	None Observed	Well Inaccessible or Abandoned	Well Abandoned	Well Abandoned
SHMW-01S/01SR	NR	NR	None Observed	None Observed	None Observed	None Observed	Well Inaccessible or Abandoned	Well Abandoned	Well Abandoned
SHMW-01I/01IR	NR	NR	None Observed	NR	NR	NR	Well Inaccessible or Abandoned	Well Abandoned	Well Abandoned
SHMW-01D	NI	NI	NI	NI	NI	NI	NI	NI	NI
SHMW-02S	NI	NI	NI	NI	NI	NI	NI	NI	NI
SHMW-02I/02IR	Trace DNAPL (coating on tubes)	Trace DNAPL (coating on tubes)	Approx. ~0.60'	Approx. 3' DNAPL	Approx. 1.5' DNAPL	Approx. 4' DNAPL	Well Inaccessible or Abandoned	Well Abandoned	Well Abandoned
SHMW-02D/02DR	NR	NR	None Observed	NR	NR	NR	Well Inaccessible or Abandoned	Well Abandoned	Well Abandoned
SHMW-03S	NR	NR	None Observed	None Observed	None Observed	None Observed	None Observed	None Observed	None Observed
SHMW-03I	NR	NR	None Observed	NR	NR	NR	None Observed	NR	None Observed
SHMW-04S/04SR	Approx. 0.50' DNAPL	Approx. 0.5' DNAPL	Approx. ~0.61'	Approx. 1.05' DNAPL	Approx. 0.6' DNAPL	Approx. 0.75' DNAPL	Well Inaccessible or Abandoned	Well Abandoned	Well Abandoned
SHMW-04I	NR	NR	None Observed	NR	NR	NR	Well Inaccessible or Abandoned	Well Abandoned	Well Abandoned
SHMW-05S/05SR	None Observed	NR	None Observed	None Observed	None Observed	None Observed	Well Inaccessible or Abandoned	Well Abandoned	Well Abandoned

Table 2. Summary of Historical NAPL Observations
Sag Harbor Former MGP Site
Groundwater Monitoring Program - Q2 2017

Well ID	Jun/Q2 2007 Observations	Sep/Q3 2007 Observations	Dec/Q4 2007 Observations	Mar/Q1 2008 Observations	Jun/Q2 2008 Observations	Sep/Q3 2008 Observations	Dec/Q4 2008 Observations	Mar/Q1 2009 Observations	Jun/Q2 2009 Observations
SHMW-05I/05IR	NR	NR	None Observed	NR	NR	NR	Well Inaccessible or Abandoned	Well Abandoned	Well Abandoned
SHMW-06S	Trace DNAPL (coating on tubes)	Trace DNAPL (coating on tubes)	Trace	Trace DNAPL (on tubing)	Trace DNAPL	Trace DNAPL (on tubing)	Well Inaccessible or Abandoned	Well Abandoned	Well Abandoned
SHMW-06I	NR	NR	None Observed	NR	NR	NR	Well Inaccessible or Abandoned	Well Abandoned	Well Abandoned
SHMW-07S/07SR	NR	NR	Trace	NR	NR	Trace DNAPL (on side of tubing approx 1' off bottom)	Well Inaccessible or Abandoned	Well Inaccessible	None Observed
SHMW-07I/07IR	NR	NR	None Observed	NR	NR	NR	Well Inaccessible or Abandoned	Well Inaccessible	None Observed
SHMW-08S	NR	NR	None Observed	None Observed	None Observed	None Observed	Well Inaccessible or Abandoned	Well Inaccessible	None Observed
SHMW-08I	NR	NR	None Observed	NR	NR	NR	Well Inaccessible or Abandoned	Well Inaccessible	None Observed
SHMW-09S	NR	NR	None Observed	None Observed	None Observed	None Observed	None Observed	Well Inaccessible	None Observed
SHMW-09I	NR	NR	None Observed	NR	NR	NR	NR	NR	NR
SHMW-10S	NR	NR	None Observed	None Observed	None Observed	None Observed	None Observed	None Observed	None Observed
SHMW-10I	NR	NR	None Observed	NR	NR	NR	NR	NR	NR
SHMW-11S	NR	NR	None Observed	None Observed	None Observed	None Observed	None Observed	None Observed	None Observed
SHMW-11I	NR	NR	None Observed	NR	NR	NR	NR	NR	NR
SHMW-12S	NR	NR	None Observed	None Observed	None Observed	None Observed	None Observed	None Observed	None Observed
SHMW-12I	NR	NR	None Observed	NR	NR	NR	NR	NR	NR
SHMW-13S	NR	NR	None Observed	None Observed	None Observed	None Observed	None Observed	None Observed	None Observed
SHMW-13I	NR	NR	None Observed	NR	NR	NR	NR	NR	NR

Table 2. Summary of Historical NAPL Observations
Sag Harbor Former MGP Site
Groundwater Monitoring Program - Q2 2017

Well ID	Sep/Q3 2009 Observations	Dec/Q4 2009 Observations	Mar/Q1 2010 Observations	Jun/Q2 2010 Observations	Sep/Q3 2010 Observations	Dec/Q4 2010 Observations	Mar/Q1 2011 Observations	Jun/Q2 2011 Observations	Sep/Q3 2011 Observations
MW-01	Well Abandoned	Well Abandoned	Well Abandoned	Well Abandoned	Well Abandoned	Well Abandoned	Well Abandoned	Well Abandoned	Well Abandoned
MW-02	Well Abandoned	Well Abandoned	Well Abandoned	Well Abandoned	Well Abandoned	Well Abandoned	Well Abandoned	Well Abandoned	Well Abandoned
MW-03	Well Abandoned	Well Abandoned	Well Abandoned	Well Abandoned	Well Abandoned	Well Abandoned	Well Abandoned	Well Abandoned	Well Abandoned
MW-04	Well Abandoned	Well Abandoned	Well Abandoned	Well Abandoned	Well Abandoned	Well Abandoned	Well Abandoned	Well Abandoned	Well Abandoned
MW-05	Well Destroyed	Well Destroyed	Well Destroyed	Well Destroyed	Well Destroyed	Well Destroyed	Well Destroyed	Well Destroyed	Well Destroyed
MW-06	Well Abandoned	Well Abandoned	Well Abandoned	Well Abandoned	Well Abandoned	Well Abandoned	Well Abandoned	Well Abandoned	Well Abandoned
SHMW-01S/01SR	Well Abandoned	Well Abandoned	Well Abandoned	Well Abandoned	Well Abandoned	None Observed	None Observed	None Observed	None Observed
SHMW-01I/01IR	Well Abandoned	Well Abandoned	Well Abandoned	Well Abandoned	Well Abandoned	None Observed	None Observed	None Observed	None Observed
SHMW-01D	NI	NI	NI	NI	NI	None Observed	None Observed	None Observed	None Observed
SHMW-02S	NI	NI	NI	NI	NI	None Observed	None Observed	None Observed	None Observed
SHMW-02I/02IR	Well Abandoned	Well Abandoned	Well Abandoned	Well Abandoned	Well Abandoned	None Observed	Well Damaged	Well Damaged	Well Damaged
SHMW-02D/02DR	Well Abandoned	Well Abandoned	Well Abandoned	Well Abandoned	Well Abandoned	None Observed	None Observed	None Observed	None Observed
SHMW-03S	None Observed	None Observed	None Observed	None Observed	None Observed	None Observed	None Observed	None Observed	None Observed
SHMW-03I	NR	None Observed	None Observed	None Observed	None Observed	None Observed	None Observed	None Observed	None Observed
SHMW-04S/04SR	Well Abandoned	Well Abandoned	Well Abandoned	Well Abandoned	Well Abandoned	Trace LNAPL - DNAPL observed on tubing	Trace LNAPL - DNAPL observed on tubing	Trace LNAPL - DNAPL observed on tubing	None Observed
SHMW-04I	Well Abandoned	Well Abandoned	Well Abandoned	Well Abandoned	Well Abandoned	Well Abandoned	Well Abandoned	Well Abandoned	Well Abandoned
SHMW-05S/05SR	Well Abandoned	Well Abandoned	Well Abandoned	Well Abandoned	Well Abandoned	None Observed	None Observed	None Observed	None Observed

Table 2. Summary of Historical NAPL Observations
Sag Harbor Former MGP Site
Groundwater Monitoring Program - Q2 2017

Well ID	Sep/Q3 2009 Observations	Dec/Q4 2009 Observations	Mar/Q1 2010 Observations	Jun/Q2 2010 Observations	Sep/Q3 2010 Observations	Dec/Q4 2010 Observations	Mar/Q1 2011 Observations	Jun/Q2 2011 Observations	Sep/Q3 2011 Observations
SHMW-05I/05IR	Well Abandoned	Well Abandoned	Well Abandoned	Well Abandoned	Well Abandoned	None Observed	None Observed	None Observed	None Observed
SHMW-06S	Well Abandoned	Well Abandoned	Well Abandoned	Well Abandoned	Well Abandoned	Well Abandoned	Well Abandoned	Well Abandoned	Well Abandoned
SHMW-06I	Well Abandoned	Well Abandoned	Well Abandoned	Well Abandoned	Well Abandoned	Well Abandoned	Well Abandoned	Well Abandoned	Well Abandoned
SHMW-07S/07SR	Trace DNAPL (on side of tubing)	None Observed	None Observed	Well Inaccessible	Well Inaccessible	Trace LNAPL - DNAPL observed on tubing	Trace LNAPL - DNAPL observed on tubing	Trace LNAPL - DNAPL observed on tubing	None Observed
SHMW-07I/07IR	NR	None Observed (approximately 10 feet of sand present in well)	None Observed (approximately 10 feet of sand present in well)	Well Inaccessible	Well Inaccessible	None Observed	None Observed	None Observed	None Observed
SHMW-08S	None Observed	None Observed	None Observed	None Observed	None Observed	None Observed	None Observed	None Observed	None Observed
SHMW-08I	NR	None Observed	None Observed	None Observed	None Observed	None Observed	None Observed	None Observed	None Observed
SHMW-09S	None Observed	None Observed	Well Inaccessible	None Observed	None Observed	No access	No access	No access	No access
SHMW-09I	NR	None Observed	None Observed	None Observed	None Observed	No access	No access	No access	No access
SHMW-10S	None Observed	None Observed	None Observed	None Observed	None Observed	None Observed	None Observed	None Observed	None Observed
SHMW-10I	NR	None Observed	None Observed	None Observed	None Observed	None Observed	None Observed	None Observed	None Observed
SHMW-11S	None Observed	None Observed	None Observed	None Observed	None Observed	None Observed	None Observed	None Observed	None Observed
SHMW-11I	NR	None Observed	None Observed	None Observed	None Observed	None Observed	None Observed	None Observed	None Observed
SHMW-12S	None Observed	None Observed	None Observed	None Observed	None Observed	None Observed	None Observed	None Observed	None Observed
SHMW-12I	NR	None Observed	None Observed	None Observed	None Observed	None Observed	None Observed	None Observed	None Observed
SHMW-13S	None Observed	None Observed	None Observed	None Observed	None Observed	None Observed	None Observed	None Observed	None Observed
SHMW-13I	NR	None Observed	None Observed	None Observed	None Observed	None Observed	None Observed	None Observed	None Observed

Table 2. Summary of Historical NAPL Observations
Sag Harbor Former MGP Site
Groundwater Monitoring Program - Q2 2017

Well ID	Dec/Q4 2011 Observations	Mar/Q1 2012 Observations	Jun/Q2 2012 Observations	Sep/Q3 2012 Observations	Dec/Q4 2012 Observations	Mar/Q1 2013 Observations	Jun/Q2 2013 Observations	Sep/Q3 2013 Observations	Dec/Q4 2013 Observations
MW-01	Well Abandoned	Well Abandoned	Well Abandoned	Well Abandoned	Well Abandoned	Well Abandoned	Well Abandoned	Well Abandoned	Well Abandoned
MW-02	Well Abandoned	Well Abandoned	Well Abandoned	Well Abandoned	Well Abandoned	Well Abandoned	Well Abandoned	Well Abandoned	Well Abandoned
MW-03	Well Abandoned	Well Abandoned	Well Abandoned	Well Abandoned	Well Abandoned	Well Abandoned	Well Abandoned	Well Abandoned	Well Abandoned
MW-04	Well Abandoned	Well Abandoned	Well Abandoned	Well Abandoned	Well Abandoned	Well Abandoned	Well Abandoned	Well Abandoned	Well Abandoned
MW-05	Well Destroyed	Well Destroyed	Well Destroyed	Well Destroyed	Well Destroyed	Well Destroyed	Well Destroyed	Well Destroyed	Well Destroyed
MW-06	Well Abandoned	Well Abandoned	Well Abandoned	Well Abandoned	Well Abandoned	Well Abandoned	Well Abandoned	Well Abandoned	Well Abandoned
SHMW-01S/01SR	None Observed	None Observed	None Observed	None Observed	None Observed	None Observed	None Observed	None Observed	None Observed
SHMW-01I/01IR	None Observed	None Observed	None Observed	None Observed	None Observed	None Observed	None Observed	None Observed	None Observed
SHMW-01D	None Observed	None Observed	None Observed	None Observed	None Observed	None Observed	None Observed	None Observed	None Observed
SHMW-02S	None Observed	None Observed	None Observed	None Observed	None Observed	None Observed	None Observed	None Observed	None Observed
SHMW-02I/02IR	None Observed	None Observed	None Observed	None Observed	None Observed	None Observed	None Observed	None Observed	Approx. 6" of DNAPL
SHMW-02D/02DR	None Observed	None Observed	None Observed	None Observed	None Observed	None Observed	None Observed	None Observed	None Observed
SHMW-03S	None Observed	None Observed	None Observed	None Observed	None Observed	None Observed	None Observed	None Observed	None Observed
SHMW-03I	None Observed	None Observed	None Observed	None Observed	None Observed	None Observed	None Observed	None Observed	None Observed
SHMW-04S/04SR	None Observed	None Observed	None Observed	None Observed	None Observed	None Observed	None Observed	None Observed	None Observed
SHMW-04I	Well Abandoned	Well Abandoned	Well Abandoned	Well Abandoned	Well Abandoned	Well Abandoned	Well Abandoned	Well Abandoned	Well Abandoned
SHMW-05S/05SR	None Observed	None Observed	None Observed	None Observed	None Observed	None Observed	None Observed	None Observed	None Observed

Table 2. Summary of Historical NAPL Observations
Sag Harbor Former MGP Site
Groundwater Monitoring Program - Q2 2017

Well ID	Dec/Q4 2011 Observations	Mar/Q1 2012 Observations	Jun/Q2 2012 Observations	Sep/Q3 2012 Observations	Dec/Q4 2012 Observations	Mar/Q1 2013 Observations	Jun/Q2 2013 Observations	Sep/Q3 2013 Observations	Dec/Q4 2013 Observations
SHMW-05I/05IR	None Observed	None Observed	None Observed	None Observed	None Observed	None Observed	None Observed	None Observed	None Observed
SHMW-06S	Well Abandoned	Well Abandoned	Well Abandoned	Well Abandoned	Well Abandoned	Well Abandoned	Well Abandoned	Well Abandoned	Well Abandoned
SHMW-06I	Well Abandoned	Well Abandoned	Well Abandoned	Well Abandoned	Well Abandoned	Well Abandoned	Well Abandoned	Well Abandoned	Well Abandoned
SHMW-07S/07SR	None Observed	None Observed	None Observed	None Observed	None Observed	None Observed	None Observed	None Observed	None Observed
SHMW-07I/07IR	None Observed	None Observed	None Observed	None Observed	None Observed	None Observed	None Observed	None Observed	None Observed
SHMW-08S	None Observed	None Observed	None Observed	None Observed	None Observed	None Observed	None Observed	None Observed	None Observed
SHMW-08I	None Observed	None Observed	None Observed	None Observed	None Observed	None Observed	None Observed	None Observed	None Observed
SHMW-09S	No access	No access	No access	No access	No access	No access	None Observed	None Observed	None Observed
SHMW-09I	No access	No access	No access	No access	No access	No access	None Observed	None Observed	None Observed
SHMW-10S	None Observed	None Observed	None Observed	None Observed	None Observed	None Observed	None Observed	None Observed	None Observed
SHMW-10I	None Observed	None Observed	None Observed	None Observed	None Observed	None Observed	None Observed	None Observed	None Observed
SHMW-11S	None Observed	None Observed	None Observed	None Observed	None Observed	None Observed	None Observed	None Observed	None Observed
SHMW-11I	None Observed	None Observed	None Observed	None Observed	None Observed	None Observed	None Observed	None Observed	None Observed
SHMW-12S	None Observed	None Observed	None Observed	None Observed	None Observed	None Observed	None Observed	None Observed	None Observed
SHMW-12I	None Observed	None Observed	None Observed	None Observed	None Observed	None Observed	None Observed	None Observed	None Observed
SHMW-13S	None Observed	None Observed	None Observed	None Observed	None Observed	None Observed	None Observed	None Observed	None Observed
SHMW-13I	None Observed	None Observed	None Observed	None Observed	None Observed	None Observed	None Observed	None Observed	None Observed

Table 2. Summary of Historical NAPL Observations
Sag Harber Former MGP Site
Groundwater Monitoring Program - Q2 2017

Well ID	Mar/Q1 2014 Observations	Jun/Q2 2014 Observations	Sep/Q3 2014 Observations	Dec/Q4 2014 Observations	Mar/Q1 2015 Observations	June/Q2 2015 Observations	Sep/Q3 2015 Observations	Dec/Q4 2015 Observations	Mar/Q1 2016 Observations
MW-01	Well Abandoned	Well Abandoned	Well Abandoned	Well Abandoned	Well Abandoned	Well Abandoned	Well Abandoned	Well Abandoned	Well Abandoned
MW-02	Well Abandoned	Well Abandoned	Well Abandoned	Well Abandoned	Well Abandoned	Well Abandoned	Well Abandoned	Well Abandoned	Well Abandoned
MW-03	Well Abandoned	Well Abandoned	Well Abandoned	Well Abandoned	Well Abandoned	Well Abandoned	Well Abandoned	Well Abandoned	Well Abandoned
MW-04	Well Abandoned	Well Abandoned	Well Abandoned	Well Abandoned	Well Abandoned	Well Abandoned	Well Abandoned	Well Abandoned	Well Abandoned
MW-05	Well Destroyed	Well Destroyed	Well Destroyed	Well Destroyed	Well Destroyed	Well Destroyed	Well Destroyed	Well Destroyed	Well Destroyed
MW-06	Well Abandoned	Well Abandoned	Well Abandoned	Well Abandoned	Well Abandoned	Well Abandoned	Well Abandoned	Well Abandoned	Well Abandoned
SHMW-01S/01SR	None Observed	None Observed	None Observed	None Observed	None Observed	None Observed	None Observed	None Observed	None Observed
SHMW-01I/01IR	None Observed	None Observed	None Observed	None Observed	None Observed	None Observed	None Observed	None Observed	None Observed
SHMW-01D	None Observed	None Observed	None Observed	None Observed	None Observed	None Observed	None Observed	None Observed	None Observed
SHMW-02S	None Observed	None Observed	None Observed	None Observed	None Observed	None Observed	None Observed	None Observed	None Observed
SHMW-02I/02IR	None Observed	None Observed	None Observed	None Observed	Approx. 14" of DNAPL	Approx. 19" of DNAPL	Approx. 18" of DNAPL	Approx. 21" of DNAPL*	Approx. 1" of DNAPL
SHMW-02D/02DR	None Observed	None Observed	None Observed	None Observed	None Observed	None Observed	None Observed	None Observed	None Observed
SHMW-03S	None Observed	None Observed	None Observed	None Observed	None Observed	None Observed	None Observed	None Observed	None Observed
SHMW-03I	None Observed	None Observed	None Observed	None Observed	None Observed	None Observed	None Observed	None Observed	None Observed
SHMW-04S/04SR	None Observed	None Observed	None Observed	None Observed	Approx. 1.5" of DNAPL	None Observed	None Observed	None Observed	None Observed
SHMW-04I	Well Abandoned	Well Abandoned	Well Abandoned	Well Abandoned	Well Abandoned	Well Abandoned	Well Abandoned	Well Abandoned	Well Abandoned
SHMW-05S/05SR	None Observed	None Observed	None Observed	None Observed	None Observed	None Observed	None Observed	None Observed	None Observed

Table 2. Summary of Historical NAPL Observations
Sag Harber Former MGP Site
Groundwater Monitoring Program - Q2 2017

Well ID	Mar/Q1 2014 Observations	Jun/Q2 2014 Observations	Sep/Q3 2014 Observations	Dec/Q4 2014 Observations	Mar/Q1 2015 Observations	June/Q2 2015 Observations	Sep/Q3 2015 Observations	Dec/Q4 2015 Observations	Mar/Q1 2016 Observations
SHMW-05I/05IR	None Observed	None Observed	None Observed	None Observed	None Observed	None Observed	None Observed	None Observed	None Observed
SHMW-06S	Well Abandoned	Well Abandoned	Well Abandoned	Well Abandoned	Well Abandoned	Well Abandoned	Well Abandoned	Well Abandoned	Well Abandoned
SHMW-06I	Well Abandoned	Well Abandoned	Well Abandoned	Well Abandoned	Well Abandoned	Well Abandoned	Well Abandoned	Well Abandoned	Well Abandoned
SHMW-07S/07SR	None Observed	DNAPL Blebs on tubing	DNAPL Blebs on tubing	Approx. 1" of DNAPL	None Observed	DNAPL Blebs on tubing	DNAPL Blebs on tubing	DNAPL Blebs on tubing	Approx. 2" of DNAPL
SHMW-07I/07IR	None Observed	None Observed	None Observed	None Observed	None Observed	None Observed	None Observed	None Observed	None Observed
SHMW-08S	None Observed	None Observed	None Observed	None Observed	None Observed	None Observed	None Observed	None Observed	None Observed
SHMW-08I	None Observed	None Observed	None Observed	None Observed	None Observed	None Observed	None Observed	None Observed	None Observed
SHMW-09S	None Observed	None Observed	None Observed	None Observed	None Observed	Approx. 0.25" of DNAPL	None Observed	None Observed	None Observed
SHMW-09I	None Observed	None Observed	None Observed	None Observed	None Observed	None Observed	None Observed	None Observed	None Observed
SHMW-10S	None Observed	None Observed	None Observed	None Observed	None Observed	None Observed	None Observed	None Observed	None Observed
SHMW-10I	None Observed	None Observed	None Observed	None Observed	None Observed	None Observed	None Observed	None Observed	None Observed
SHMW-11S	None Observed	None Observed	None Observed	None Observed	None Observed	None Observed	None Observed	None Observed	None Observed
SHMW-11I	None Observed	None Observed	None Observed	None Observed	None Observed	None Observed	None Observed	None Observed	None Observed
SHMW-12S	None Observed	None Observed	None Observed	None Observed	None Observed	None Observed	None Observed	None Observed	None Observed
SHMW-12I	None Observed	None Observed	None Observed	None Observed	None Observed	None Observed	None Observed	None Observed	None Observed
SHMW-13S	None Observed	None Observed	None Observed	None Observed	None Observed	None Observed	None Observed	None Observed	None Observed
SHMW-13I	None Observed	None Observed	None Observed	None Observed	None Observed	None Observed	None Observed	None Observed	None Observed

Table 2. Summary of Historical NAPL Observations
Sag Harbor Former MGP Site
Groundwater Monitoring Program - Q2 2017

Well ID	Jun/Q2 2016 Observations	Sep/Q3 2016 Observations	Dec/Q4 2016 Observations	Mar/Q1 2017 Observations	May/Q2 2017 Observations
MW-01	Well Abandoned	Well Abandoned	Well Abandoned	Well Abandoned	Well Abandoned
MW-02	Well Abandoned	Well Abandoned	Well Abandoned	Well Abandoned	Well Abandoned
MW-03	Well Abandoned	Well Abandoned	Well Abandoned	Well Abandoned	Well Abandoned
MW-04	Well Abandoned	Well Abandoned	Well Abandoned	Well Abandoned	Well Abandoned
MW-05	Well Destroyed	Well Destroyed	Well Destroyed	Well Destroyed	Well Destroyed
MW-06	Well Abandoned	Well Abandoned	Well Abandoned	Well Abandoned	Well Abandoned
SHMW-01S/01SR	None Observed	None Observed	None Observed	None Observed	None Observed
SHMW-01I/01IR	None Observed	None Observed	None Observed	None Observed	None Observed
SHMW-01D	None Observed	None Observed	None Observed	None Observed	None Observed
SHMW-02S	None Observed	None Observed	None Observed	None Observed	None Observed
SHMW-02I/02IR	Approx. 4" of DNAPL	Approx. 2.5" of DNAPL	Approx. 4" of DNAPL	Approx. 4" of DNAPL	Approx. 12" of DNAPL
SHMW-02D/02DR	None Observed	None Observed	None Observed	None Observed	None Observed
SHMW-03S	None Observed	None Observed	None Observed	None Observed	None Observed
SHMW-03I	None Observed	None Observed	None Observed	None Observed	None Observed
SHMW-04S/04SR	None Observed	None Observed	None Observed	None Observed	None Observed
SHMW-04I	Well Abandoned	Well Abandoned	Well Abandoned	Well Abandoned	Well Abandoned
SHMW-05S/05SR	None Observed	None Observed	None Observed	None Observed	None Observed

Table 2. Summary of Historical NAPL Observations
Sag Harbor Former MGP Site
Groundwater Monitoring Program - Q2 2017

Well ID	Jun/Q2 2016 Observations	Sep/Q3 2016 Observations	Dec/Q4 2016 Observations	Mar/Q1 2017 Observations	May/Q2 2017 Observations
SHMW-05I/05IR	None Observed	None Observed	None Observed	None Observed	None Observed
SHMW-06S	Well Abandoned	Well Abandoned	Well Abandoned	Well Abandoned	Well Abandoned
SHMW-06I	Well Abandoned	Well Abandoned	Well Abandoned	Well Abandoned	Well Abandoned
SHMW-07S/07SR	Blebs of DNAPL	DNAPL Blebs on tubing	None Observed	DNAPL Blebs on tubing	DNAPL Blebs on tubing
SHMW-07I/07IR	None Observed	None Observed	None Observed	None Observed	None Observed
SHMW-08S	None Observed	None Observed	None Observed	None Observed	None Observed
SHMW-08I	None Observed	None Observed	None Observed	None Observed	None Observed
SHMW-09S	None Observed	None Observed	None Observed	None Observed	None Observed
SHMW-09I	None Observed	None Observed	None Observed	None Observed	None Observed
SHMW-10S	None Observed	None Observed	None Observed	None Observed	None Observed
SHMW-10I	None Observed	None Observed	None Observed	None Observed	None Observed
SHMW-11S	None Observed	None Observed	None Observed	None Observed	None Observed
SHMW-11I	None Observed	None Observed	None Observed	None Observed	None Observed
SHMW-12S	None Observed	None Observed	None Observed	None Observed	None Observed
SHMW-12I	None Observed	None Observed	None Observed	None Observed	None Observed
SHMW-13S	None Observed	None Observed	None Observed	None Observed	None Observed
SHMW-13I	None Observed	None Observed	None Observed	None Observed	None Observed

General Notes:

DNAPL = Dense Non-aqueous Phase Liquid
LNAPL = Light Non-aqueous Phase Liquid
WC = Water Column
NR = Gauging Not Required
NI = Not Installed

Table 3. Summary of BTEX and PAH Results
Sag Harbor Former MGP Site
Groundwater Monitoring Program - Q2 2017

Sample Name Sample Date Parent Sample			SHMW-04SR 5/16/2017	Dup-01 5/16/2017 SHMW-04SR	SHMW-05SR 5/16/2017	SHMW-08S 5/16/2017	SHMW-09S 5/16/2017	SHMW-09I 5/16/2017	SHMW-12S 5/16/2017
Analyte	Units	NYS AWQS							
BTEX	µg/L								
Benzene		1	27	28	4.8	3.1	13	1 U	450
Toluene		5	6	6.1	1 U	0.26 J	1 U	1 U	1.4
Ethylbenzene		5	160	170	1 U	1 U	1.6 J	1 U	25
Total Xylene		5	110	110	2 U	2 U	3.9 J	2 U	55
Total BTEX (ND=0)		NE	303	314.1	4.8	3.36	18.5	ND	531.4
Other VOCs	µg/L								
Methyl tert-butyl ether (MTBE)		10*	1 U	1 U	1 U	4.5	1 U	1 U	0.8 J
NYSDEC PAH17	µg/L								
Acenaphthene		20*	77	73	29	16	21	10 U	50 U
Acenaphthylene		NE	10 U	2.3 J	10 U	0.7 J	10 U	10 U	50 U
Anthracene		50*	4.3 J	2.8 J	0.79 J	10 U	1.6 J	10 U	50 U
Benzo(a)anthracene		0.002*	1 U	1 U	1 U	1 U	1 U	1 U	5 U
Benzo(b)fluoranthene		0.002*	1 U	1 U	1 U	1 U	1 U	1 U	5 U
Benzo(k)fluoranthene		0.002*	1 U	1 U	1 U	1 U	1 U	1 U	5 U
Benzo(g,h,i)perylene		NE	10 U	10 U	10 U	10 U	10 U	10 U	50 U
Benzo(a)pyrene		ND	1 U	1 U	1 U	1 U	1 U	1 U	5 U
Chrysene		0.002*	2 U	2 U	2 U	2 U	2 U	2 U	10 U
Dibenz(a,h)anthracene		NE	1 U	1 U	1 U	1 U	1 U	1 U	5 U
Fluoranthene		50*	4.1 J	4.1 J	10 U	2.5 J	10 U	10 U	50 U
Fluorene		50*	30 J	18 J	9.1 J	2.3 J	9.5 J	10 U	50 U
Indeno(1,2,3-cd)pyrene		0.002*	1 U	1 U	1 U	1 U	1 U	1 U	5 U
2-Methylnaphthalene		NE	16	10 U	10	1.4 J	10 U	10 U	12 J
Naphthalene		10*	14	10 U	53	10 U	10 U	10 U	520
Phenanthrene		50*	20 J	3.5 J	5.6 J	1.6 J	4.7 J	10 U	50 U
Pyrene		50*	4.9 J	4.1 J	10 U	3.5 J	10 U	10 U	50 U
Total PAH (17) (ND=0)		NE	170.3	107.8	107.49	28	36.8	ND	532

Notes:

µg/L = micrograms per liter or parts per billion (ppb)

BTEX = benzene, toluene, ethylbenzene, and xylenes

PAH = polycyclic aromatic hydrocarbons

VOCs = volatile organic compounds

Total BTEX and Total PAHs are calculated using detects only.

Total PAH16 is calculated using the EPA16 list of analytes: Acenaphthene, Acenaphthylene, Anthracene, Benz[a]anthracene, Benzo[a]pyrene, Benzo[b]fluoranthene, Benzo[g,h,i]perylene, Benzo[k]fluoranthene, Chrysene, Dibenz[a,h]anthracene, Fluoranthene, Fluorene, Indeno[1,2,3-cd]pyrene, Naphthalene, Phenanthrene, and Pyrene

Total PAH17 is calculated using the EPA16 list of analytes plus 2-Methylnaphthalene

NYS AWQS - New York State Ambient Water Quality Standards and Guidance Values for GA groundwater

* indicates the value is a guidance value and not a standard

ND = not detected

NE = not established

NYSDEC = New York State Department of Environmental Conservation

Bolding indicates a detected result concentration

Gray shading and bolding indicates that the detected result value exceeds the NYS AWQS

Validator Qualifiers:

J = estimated value

U = indicates not detected to the reporting limit

Table 4. Summary of Historical Total BTEX Results
Sag Harbor Former MGP Site
Groundwater Monitoring Program - Q2 2017

Well No.	Screen Interval (feet)	Total BTEX Concentrations (µg/L)																			
		Sampling Date																			
		1995	2000			2002	2004			2005				2006				2007			
		Nov	Mar	Apr	May	May	Aug	Mar/Apr	Jun	Sep	Dec	Mar	Jun	Sep	Dec	Mar	Jun	Sep	Dec		
MW-01	1.50 - 7.32	2,720	10	68	9	4	0	0	12	67	0	21	47	310	190	160	240	150	270		
MW-02	0.50 - 7.25	5,429	8,840	7,940	5,840	13,287	8,740	7,333	13,010	--	13,720	7,591	--	14,174	12,267	8,678	12,810	15,181	98		
MW-03	2.17 - 10.17	1,222	668	1,553	1,363	2,573	--	2,050	2,867	560	2,622	4,880	1,971	4,965	2,398	1,680	2,930	3,225	2,831		
MW-04	1.25 - 6.81	864	35	--	10	208	--	0	0	225	299	268	193	181	101	0	51	89	66		
MW-05	2.46 - 7.46	9,100	170	5	102	11,600	2,938	2,697	18,900	--	--	--	--	--	--	--	--	--	--		
MW-06	2.47 - 7.47	334	47	30	91	49	--	33	55	39	36	74	37	11	54	0	37	31	0		
SHMW-01S/01SR	1.0 - 6.0	--	--	1,413	874	2,102	--	1,367	1,810	406	1,313	2,562	2,085	5,183	2,915	691	2,460	2,600	1,684		
SHMW-01I/01IR	35.0 - 45.0	--	--	5	0	0	--	--	--	--	0	--	--	--	0	0	--	--	--		
SHMW-01D	65.0 - 75.0	--	--	--	--	--	--	--	--	--	--	--	--	--	--	--	--	--	--		
SHMW-02S	1.0 - 6.0	--	--	--	--	--	--	--	--	--	--	--	--	--	--	--	--	--	--		
SHMW-02I/02IR	35.0 - 45.0	--	--	26	0	1,179	16	20	20	19	25	0	0	0	0	--	11	12	15		
SHMW-02D/02DR	65.0 - 75.0	--	--	5	4	0	--	--	--	--	0	--	--	--	0	--	--	--	0		
SHMW-03S	2.0 - 12.0	--	--	63	0	110	--	48	53	46	75	131	67	97	13	122	80	12	50		
SHMW-03I	35.0 - 45.0	--	--	0	52	0	--	--	--	--	0	--	--	--	0	--	--	--	0		
SHMW-04S/04SR	2.0 - 12.0	--	--	7,940	3,154	12,180	--	9,369	17,730	8,960	21,920	25,860	9,361	18,398	10,489	6,883	20,488	16,120	10,378		
SHMW-04I	35.0 - 45.0	--	--	5	0	0	--	--	--	--	0	--	--	--	0	--	--	--	0		
SHMW-05S/05SR	2.0 - 12.0	--	--	37	69	83	--	107	282	2,960	115	202	45	43	26	35	458	676	98		
SHMW-05I/05IR	35.0 - 45.0	--	--	0	0	0	--	--	--	--	0	--	--	--	0	--	--	--	0		
SHMW-06S	2.0 - 6.0	--	--	2,392	2,463	3,057	--	2,630	1,950	--	2,910	2,622	1,702	4,289	2,196	1,475	2,285	2,162	1,565		
SHMW-06I	35.0 - 45.0	--	--	0	0	0	--	--	--	--	0	--	--	--	0	--	--	--	0		
SHMW-07S/07SR	1.0 - 11.0	--	--	2,011	1,562	414	--	1,482	3,340	2,458	1,722	1,400	1,060	--	1,137	185	--	2,139	726		
SHMW-07I/07IR	35.0 - 45.0	--	--	0	0	0	--	--	--	--	0	--	--	--	0	--	--	--	0		
SHMW-08S	1.0 - 7.0	--	--	5	2	9	--	0	14	0	15	11	0	19	0	0	0	0	12		
SHMW-08I	35.0 - 45.0	--	--	0	0	0	--	--	--	--	0	--	--	--	0	--	--	--	0		
SHMW-09S	2.0 - 12.0	--	--	1,024	506	1,100	--	500	1,000	--	920	1,130	770	768	500	418	1,240	178	600		
SHMW-09I	35.0 - 45.0	--	--	0	0	0	--	--	--	--	0	--	--	--	0	--	--	--	0		
SHMW-10S	5.0 - 15.0	--	--	--	0	0	--	0	0	0	0	0	0	0	0	0	0	0	0		
SHMW-10I	35.5 - 45.5	--	--	--	0	0	--	--	--	--	0	--	--	--	0	--	--	--	0		
SHMW-11S	3.5 - 13.5	--	--	--	0	0	--	0	0	0	0	0	0	0	0	0	0	0	0		
SHMW-11I	35.0 - 45.0	--	--	--	0	0	--	--	--	--	0	--	--	--	0	--	--	--	0		
SHMW-12S	1.5 - 6.5	--	--	--	0	344	--	142	930	69	290	140	463	581	182	85	623	81	0		
SHMW-12I	35.0 - 45.0	--	--	--	0	0	--	--	--	--	0	--	--	--	0	--	--	--	23		
SHMW-13S	1.5 - 6.5	--	--	--	0	0	--	0	0	0	0	0	0	0	0	0	0	0	0		
SHMW-13I	35.0 - 45.0	--	--	--	0	0	--	--	--	--	0	--	--	--	0	--	--	--	0		

Table 4. Summary of Historical Total BTEX Results
Sag Harbor Former MGP Site
Groundwater Monitoring Program - Q2 2017

Well No.	Screen Interval (feet)	Total BTEX Concentrations (µg/L)																	
		Sampling Date																	
		2008				2009				2010				2011				2012	
		Mar	Jun	Sep	Dec	Mar	Jun	Sep	Dec	Mar	Jun	Sep	Dec	Mar	Jun	Sep	Dec	Mar	Jun
MW-01	1.50 - 7.32	337	141	208	--	--	--	--	--	--	--	--	--	--	--	--	--	--	--
MW-02	0.50 - 7.25	8,865	7,415	2,240	--	--	--	--	--	--	--	--	--	--	--	--	--	--	--
MW-03	2.17 - 10.17	2,842	2,241	2,875	--	--	--	--	--	--	--	--	--	--	--	--	--	--	--
MW-04	1.25 - 6.81	--	15	79	--	--	--	--	--	--	--	--	--	--	--	--	--	--	--
MW-05	2.46 - 7.46	--	--	--	--	--	--	--	--	--	--	--	--	--	--	--	--	--	--
MW-06	2.47 - 7.47	1	33	7	--	--	--	--	--	--	--	--	--	--	--	--	--	--	--
SHMW-01S/01SR	1.0 - 6.0	1,595	306	243	--	--	--	--	--	--	--	--	0	1	0	0	3	0	0
SHMW-01I/01IR	35.0 - 45.0	--	--	--	--	--	--	--	--	--	--	--	0	--	--	--	3	--	--
SHMW-01D	65.0 - 75.0	--	--	--	--	--	--	--	--	--	--	--	0	--	--	--	3	--	--
SHMW-02S	1.0 - 6.0	--	--	--	--	--	--	--	--	--	--	--	3	0	3	0	5	1	0
SHMW-02I/02IR	35.0 - 45.0	18	41	29	--	--	--	--	--	--	--	--	4	0	--	--	14	--	--
SHMW-02D/02DR	65.0 - 75.0	--	--	--	--	--	--	--	--	--	--	--	0	--	--	--	0	--	--
SHMW-03S	2.0 - 12.0	3	0	5	13	111	24	4	9	40	5	0	9	24	2	3	18	0	1
SHMW-03I	35.0 - 45.0	--	--	--	0	--	0	--	0	--	--	--	0	--	--	--	0	--	--
SHMW-04S/04SR	2.0 - 12.0	7,567	8,059	7,561	--	--	--	--	--	--	--	--	2,717	702	469	292	572	391	709
SHMW-04I	35.0 - 45.0	--	--	--	--	--	--	--	--	--	--	--	--	--	--	--	--	--	--
SHMW-05S/05SR	2.0 - 12.0	77	83	64	--	--	--	--	--	--	--	--	20	22	25	27	45	25	29
SHMW-05I/05IR	35.0 - 45.0	--	--	--	--	--	--	--	--	--	--	--	0	--	--	--	0	--	--
SHMW-06S	2.0 - 6.0	1,296	1,343	1,298	--	--	--	--	--	--	--	--	--	--	--	--	--	--	--
SHMW-06I	35.0 - 45.0	--	--	--	--	--	--	--	--	--	--	--	--	--	--	--	--	--	--
SHMW-07S/07SR	1.0 - 11.0	--	1,075	1,374	--	--	1,500	3,472	2,183	1,825	3,946	--	858	455	1,172	607	700	1,418	670
SHMW-07I/07IR	35.0 - 45.0	--	--	--	--	--	--	--	--	--	--	--	0	--	--	--	11	--	--
SHMW-08S	1.0 - 7.0	8	9	10	--	--	5	5	4	6	13	4	9	7	10	5	9	5	7
SHMW-08I	35.0 - 45.0	--	--	--	--	--	0	--	0	--	--	--	0	--	--	--	5	--	--
SHMW-09S	2.0 - 12.0	1,039	1,298	671	483	--	584	455	224	--	--	--	--	--	--	--	--	--	--
SHMW-09I	35.0 - 45.0	--	--	--	0	--	0	--	0	--	--	--	--	--	--	--	--	--	--
SHMW-10S	5.0 - 15.0	0	1	0	0	0	0	0	0	0	0	0	0	0	0	0	0	0	0
SHMW-10I	35.5 - 45.5	--	--	--	0	--	0	--	0	--	--	--	0	--	--	--	5	--	--
SHMW-11S	3.5 - 13.5	0	0	0	0	0	0	0	0	0	0	0	0	0	0	0	8	0	0
SHMW-11I	35.0 - 45.0	--	--	--	0	--	0	--	0	--	--	--	0	--	--	--	0	--	--
SHMW-12S	1.5 - 6.5	166	482	111	279	28	315	45	58	222	217	8	70	82	672	473	337	127	434
SHMW-12I	35.0 - 45.0	--	--	--	0	--	--	--	2	--	--	--	0	--	--	--	6	--	--
SHMW-13S	1.5 - 6.5	0	0	0	0	0	0	0	0	0	0	0	0	0	0	3	3	12	0
SHMW-13I	35.0 - 45.0	--	--	--	0	--	0	--	0	--	--	--	0	--	--	--	0	--	--

Table 4. Summary of Historical Total BTEX Results
Sag Harbor Former MGP Site
Groundwater Monitoring Program - Q2 2017

Well No.	Screen Interval (feet)	Total BTEX Concentrations (µg/L)																	
		Sampling Date																	
		2012		2013				2014				2015				2016			
		Sep	Dec	Mar	Jun	Sep	Dec	Mar	Jun	Sep	Dec	Mar	Jun	Sep	Dec	Mar	Jun	Sep	Dec
MW-01	1.50 - 7.32	--	--	--	--	--	--	--	--	--	--	--	--	--	--	--	--	--	--
MW-02	0.50 - 7.25	--	--	--	--	--	--	--	--	--	--	--	--	--	--	--	--	--	--
MW-03	2.17 - 10.17	--	--	--	--	--	--	--	--	--	--	--	--	--	--	--	--	--	--
MW-04	1.25 - 6.81	--	--	--	--	--	--	--	--	--	--	--	--	--	--	--	--	--	--
MW-05	2.46 - 7.46	--	--	--	--	--	--	--	--	--	--	--	--	--	--	--	--	--	--
MW-06	2.47 - 7.47	--	--	--	--	--	--	--	--	--	--	--	--	--	--	--	--	--	--
SHMW-01S/01SR	1.0 - 6.0	0	0	1	8	0	0	0	--	0	--	--	--	0	--	--	--	0	--
SHMW-01I/01IR	35.0 - 45.0	--	0	--	--	--	1	--	--	--	--	--	--	--	--	--	--	--	--
SHMW-01D	65.0 - 75.0	--	0	--	--	--	0	--	--	--	--	--	--	--	--	--	--	--	--
SHMW-02S	1.0 - 6.0	0	0	0	5	0	0	0	--	0	--	--	--	0	--	--	--	0	--
SHMW-02I/02IR	35.0 - 45.0	--	0	--	--	--	11	--	--	0	--	--	--	115	--	--	--	--	--
SHMW-02D/02DR	65.0 - 75.0	--	0	--	--	--	0	--	--	--	--	--	--	--	--	--	--	--	--
SHMW-03S	2.0 - 12.0	1	0	6	0	0	2	3	--	5	--	--	--	47	--	--	--	9	--
SHMW-03I	35.0 - 45.0	--	0	--	--	--	4	--	--	0	--	--	--	0	--	--	--	--	0
SHMW-04S/04SR	2.0 - 12.0	654	449	158	14	949	1,846	145	504	900	302	369	428	504	297	328	840	461	372
SHMW-04I	35.0 - 45.0	--	--	--	--	--	--	--	--	--	--	--	--	--	--	--	--	--	--
SHMW-05S/05SR	2.0 - 12.0	28	16	16	683	17	21	13	12	15	9	12	7	14	20	8	8	11	12
SHMW-05I/05IR	35.0 - 45.0	--	0	--	--	--	0	--	--	0	--	--	--	0	--	--	--	--	0
SHMW-06S	2.0 - 6.0	--	--	--	--	--	--	--	--	--	--	--	--	--	--	--	--	--	--
SHMW-06I	35.0 - 45.0	--	--	--	--	--	--	--	--	--	--	--	--	--	--	--	--	--	--
SHMW-07S/07SR	1.0 - 11.0	2,822	251	1,289	852	972	1,305	769	1991	3,508	840	0	1,777	1,938	1,362	577	2,600	--	1,047
SHMW-07I/07IR	35.0 - 45.0	--	0	--	--	--	0	--	--	--	--	--	--	--	--	--	--	--	--
SHMW-08S	1.0 - 7.0	2	6	5	6	4	3	8	4	2	5	10	4	5	5	4	7	4	4
SHMW-08I	35.0 - 45.0	--	0	--	--	--	0	--	--	0	--	--	--	0	--	--	--	--	0
SHMW-09S	2.0 - 12.0	130	165	167	198	118	93	155	193	136	53	92	136	102	86	84	151	46	29
SHMW-09I	35.0 - 45.0	0	0	--	--	--	2	--	--	4	--	--	--	408	--	--	--	10	3
SHMW-10S	5.0 - 15.0	0	0	0	0	0	0	0	--	0	--	--	--	0	--	--	--	--	--
SHMW-10I	35.5 - 45.5	--	0	--	--	--	0	--	--	--	--	--	--	--	--	--	--	--	--
SHMW-11S	3.5 - 13.5	0	0	0	0	0	0	0	0	0	0	0	0	0	0	0	0	0	--
SHMW-11I	35.0 - 45.0	--	0	--	--	--	0	--	--	--	--	--	--	--	--	--	--	--	--
SHMW-12S	1.5 - 6.5	41	19	87	175	142	26	67	175	56	159	82	407	136	154	159	638	209	80
SHMW-12I	35.0 - 45.0	--	0	--	--	--	0	--	--	--	--	--	--	--	--	--	--	--	--
SHMW-13S	1.5 - 6.5	0	0	0	0	0	0	0	--	0	--	--	--	0	--	--	--	--	--
SHMW-13I	35.0 - 45.0	--	0	--	--	--	0	--	--	--	--	--	--	--	--	--	--	--	--

Table 4. Summary of Historical Total BTEX Results
Sag Harbor Former MGP Site
Groundwater Monitoring Program - Q2 2017

Well No.	Screen Interval (feet)	Total BTEX Concentrations (µg/L)				
		Sampling Date		Min	Max	Mean
		2017				
		Mar	May			
MW-01	1.50 - 7.32	--	--	0	2,720	236
MW-02	0.50 - 7.25	--	--	98	15,181	9,129
MW-03	2.17 - 10.17	--	--	560	4,965	2,416
MW-04	1.25 - 6.81	--	--	0	864	149
MW-05	2.46 - 7.46	--	--	5	18,900	5,689
MW-06	2.47 - 7.47	--	--	0	334	50
SHMW-01S/01SR	1.0 - 6.0	--	--	0	5,183	903
SHMW-01I/01IR	35.0 - 45.0	--	--	0	5	1
SHMW-01D	65.0 - 75.0	--	--	0	3	1
SHMW-02S	1.0 - 6.0	--	--	0	5	1
SHMW-02I/02IR	35.0 - 45.0	--	--	0	1,179	63
SHMW-02D/02DR	65.0 - 75.0	--	--	0	5	1
SHMW-03S	2.0 - 12.0	--	--	0	131	30
SHMW-03I	35.0 - 45.0	--	--	0	52	4
SHMW-04S/04SR	2.0 - 12.0	329	303	14	25,860	5,298
SHMW-04I	35.0 - 45.0	--	--	0	5	1
SHMW-05S/05SR	2.0 - 12.0	18	5	5	2,960	147
SHMW-05I/05IR	35.0 - 45.0	--	--	0	0	0
SHMW-06S	2.0 - 6.0	--	--	1,296	4,289	2,214
SHMW-06I	35.0 - 45.0	--	--	0	0	0
SHMW-07S/07SR	1.0 - 11.0	--	--	0	3,946	1,473
SHMW-07I/07IR	35.0 - 45.0	--	--	0	11	1
SHMW-08S	1.0 - 7.0	6	3	0	19	6
SHMW-08I	35.0 - 45.0	--	--	0	5	0
SHMW-09S	2.0 - 12.0	35	19	19	1,298	429
SHMW-09I	35.0 - 45.0	0	0	0	408	24
SHMW-10S	5.0 - 15.0	--	--	0	1	0
SHMW-10I	35.5 - 45.5	--	--	0	5	0
SHMW-11S	3.5 - 13.5	--	--	0	8	0
SHMW-11I	35.0 - 45.0	--	--	0	0	0
SHMW-12S	1.5 - 6.5	164	531	0	930	222
SHMW-12I	35.0 - 45.0	--	--	0	23	3
SHMW-13S	1.5 - 6.5	--	--	0	12	0
SHMW-13I	35.0 - 45.0	--	--	0	0	0

NOTES:

-- not analyzed or not applicable

µg/L - micrograms per liter

BTEX - benzene, toluene, ethylbenzene, and xylenes

Table 5. Summary of Historical Total PAH Results
Sag Harbor Former MGP Site
Groundwater Monitoring Program - Q2 2017

Well No.	Screen Interval (feet)	Total PAH Concentrations (µg/L)																	
		Sampling Date																	
		1995	2000		2002	2004		2005				2006				2007			
		Nov	Mar	Apr	May	May	Aug	Mar/Apr	Jun	Sep	Dec	Mar	Jun	Sep	Dec	Mar	Jun	Sep	Dec
MW-01	1.50 - 7.32	4,906	1,548	257	402	30	24	0	61	200	0	0	0	97	95	0	54	87	39
MW-02	0.50 - 7.25	6,991	5,511	5,114	10,729	25,167	4,414	5,809	10,504	--	6,919	5,209	--	0	8,617	3,150	7,421	5,398	165
MW-03	2.17 - 10.17	7,034	3,065	3,433	3,774	3,522	--	2,272	4,557	516	92	1,256	565	4,831	6,212	349	489	463	2,904
MW-04	1.25 - 6.81	3,612	75	--	0	90	--	0	22	1,098	103	11	37	66	31	0	66	238	6
MW-05	2.46 - 7.46	16,386	779	101	1,160	431,600	2,049	918	188,200	--	--	--	--	--	--	--	--	--	--
MW-06	2.47 - 7.47	5,416	894	653	258	33	--	90	79	204	0	22	0	0	645	35	46	17	0
SHMW-01S/01SR	1.0 - 6.0	--	--	4,147	2,663	2,424	--	1,989	2,185	840	0	42	115	3,989	3,874	0	1,058	1,691	42
SHMW-01I/01IR	35.0 - 45.0	--	--	32	0	0	--	--	--	--	0	--	--	--	0	--	--	--	--
SHMW-01D	65.0 - 75.0	--	--	--	--	--	--	--	--	--	--	--	--	--	--	--	--	--	--
SHMW-02S	1.0 - 6.0	--	--	--	--	--	--	--	--	--	--	--	--	--	--	--	--	--	--
SHMW-02I/02IR	35.0 - 45.0	--	--	266	0	580,200	41	185	124	271	30	74	32	91	89	0	10	175	32
SHMW-02D/02DR	65.0 - 75.0	--	--	308	76	89	--	--	--	--	0	--	--	--	0	--	--	--	15
SHMW-03S	2.0 - 12.0	--	--	422	0	295	--	79	130	117	339	0	0	147	118	430	191	12	154
SHMW-03I	35.0 - 45.0	--	--	2	320	0	--	--	--	--	0	--	--	--	0	--	--	--	0
SHMW-04S/04SR	2.0 - 12.0	--	--	4,275	5,107	5,965	--	3,959	6,669	4,684	5,879	2,364	3,572	4,196	6,250	2,632	3,999	4,693	4,305
SHMW-04I	35.0 - 45.0	--	--	18	0	0	--	--	--	--	0	--	--	--	0	--	--	--	0
SHMW-05S/05SR	2.0 - 12.0	--	--	13	170	94	--	82	91	26	53	17	11	11	110	0	0	14	8
SHMW-05I/05IR	35.0 - 45.0	--	--	0	17	0	--	--	--	--	0	--	--	--	0	--	--	--	0
SHMW-06S	2.0 - 6.0	--	--	4,130	4,694	3,024	--	3,162	2,366	--	4,157	120	201	3,900	4,062	1,703	3,574	4,368	380
SHMW-06I	35.0 - 45.0	--	--	2	0	0	--	--	--	--	0	--	--	--	0	--	--	--	0
SHMW-07S/07SR	1.0 - 11.0	--	--	7,211	6,585	2,708	--	3,224	4,604	6,187	3,507	2,004	3,119	--	3,721	0	--	3,902	4
SHMW-07I/07IR	35.0 - 45.0	--	--	0	0	0	--	--	--	--	0	--	--	--	2,212	--	--	--	0
SHMW-08S	1.0 - 7.0	--	--	110	71	94	--	25	70	33	83	112	57	77	99	13	90	10	13
SHMW-08I	35.0 - 45.0	--	--	13	0	0	--	--	--	--	0	--	--	--	0	--	--	--	0
SHMW-09S	2.0 - 12.0	--	--	1,787	2,472	1,697	--	1,463	1,600	--	2,609	94	1,935	1,138	2,737	48	206	2,246	130
SHMW-09I	35.0 - 45.0	--	--	3	0	0	--	--	--	--	0	--	--	--	0	--	--	--	0
SHMW-10S	5.0 - 15.0	--	--	--	22	6	--	0	0	0	0	0	0	0	0	0	0	0	1
SHMW-10I	35.5 - 45.5	--	--	--	0	0	--	--	--	--	0	--	--	--	0	--	--	--	0
SHMW-11S	3.5 - 13.5	--	--	--	0	3	--	173	0	0	0	0	0	0	0	0	0	0	0
SHMW-11I	35.0 - 45.0	--	--	--	0	0	--	--	--	--	0	--	--	--	0	--	--	--	4
SHMW-12S	1.5 - 6.5	--	--	--	60	218	--	71	600	230	260	110	470	310	280	15	560	0	155
SHMW-12I	35.0 - 45.0	--	--	--	0	0	--	--	--	--	0	--	--	--	0	--	--	--	20
SHMW-13S	1.5 - 6.5	--	--	--	0	0	--	0	0	0	0	0	0	0	0	0	0	0	0
SHMW-13I	35.0 - 45.0	--	--	--	0	0	--	--	--	--	0	--	--	--	0	--	--	--	0

Table 5. Summary of Historical Total PAH Results
Sag Harbor Former MGP Site
Groundwater Monitoring Program - Q2 2017

Well No.	Screen Interval (feet)	Total PAH Concentrations (µg/L)																	
		Sampling Date																	
		2008				2009				2010				2011				2012	
		Mar	Jun	Sep	Dec	Mar	Jun	Sep	Dec	Mar	Jun	Sep	Dec	Mar	Jun	Sep	Dec	Mar	Jun
MW-01	1.50 - 7.32	145	2	35	--	--	--	--	--	--	--	--	--	--	--	--	--	--	--
MW-02	0.50 - 7.25	400	3,455	3,488	--	--	--	--	--	--	--	--	--	--	--	--	--	--	--
MW-03	2.17 - 10.17	508	96	1,109	--	--	--	--	--	--	--	--	--	--	--	--	--	--	--
MW-04	1.25 - 6.81	--	0	22	--	--	--	--	--	--	--	--	--	--	--	--	--	--	--
MW-05	2.46 - 7.46	--	--	--	--	--	--	--	--	--	--	--	--	--	--	--	--	--	--
MW-06	2.47 - 7.47	0	0	10	--	--	--	--	--	--	--	--	--	--	--	--	--	--	--
SHMW-01S/01SR	1.0 - 6.0	0	0	0	--	--	--	--	--	--	--	--	0	0	0	0	4	7	21
SHMW-01I/01IR	35.0 - 45.0	--	--	--	--	--	--	--	--	--	--	--	0	--	--	--	0	--	--
SHMW-01D	65.0 - 75.0	--	--	--	--	--	--	--	--	--	--	--	0	--	--	--	0	--	--
SHMW-02S	1.0 - 6.0	--	--	--	--	--	--	--	--	--	--	--	0	0	0	0	0	5	0
SHMW-02I/02IR	35.0 - 45.0	8	42	209	--	--	--	--	--	--	--	--	9	3	--	--	0	--	--
SHMW-02D/02DR	65.0 - 75.0	--	--	--	--	--	--	--	--	--	--	--	0	--	--	--	0	--	--
SHMW-03S	2.0 - 12.0	0	0	17	29	0	20	0	0	0	22	0	0	2	7	25	22	6	10
SHMW-03I	35.0 - 45.0	--	--	--	0	--	0	--	0	--	--	--	0	--	--	--	0	--	--
SHMW-04S/04SR	2.0 - 12.0	0	1,328	1,868	--	--	--	--	--	--	--	--	3,598	1,440	978	811	942	581	1,296
SHMW-04I	35.0 - 45.0	--	--	--	--	--	--	--	--	--	--	--	--	--	--	--	--	--	--
SHMW-05S/05SR	2.0 - 12.0	2	0	31	--	--	--	--	--	--	--	--	0	4	167	273	131	309	219
SHMW-05I/05IR	35.0 - 45.0	--	--	--	--	--	--	--	--	--	--	--	0	--	--	--	0	--	--
SHMW-06S	2.0 - 6.0	0	44	5,848	--	--	--	--	--	--	--	--	--	--	--	--	--	--	--
SHMW-06I	35.0 - 45.0	--	--	--	--	--	--	--	--	--	--	--	--	--	--	--	--	--	--
SHMW-07S/07SR	1.0 - 11.0	--	54	3,252	--	--	2,919	4,722	5,286	3,410	4,547	--	1,456	0	1,736	885	955	927	444
SHMW-07I/07IR	35.0 - 45.0	--	--	--	--	--	--	--	--	--	--	--	0	--	--	--	4	--	--
SHMW-08S	1.0 - 7.0	14	21	55	--	--	59	60	112	129	201	34	3	11	185	195	35	152	111
SHMW-08I	35.0 - 45.0	--	--	--	--	--	1	--	0	--	--	--	0	--	--	--	0	--	--
SHMW-09S	2.0 - 12.0	0	92	485	503	--	68	39	389	--	--	--	--	--	--	--	--	--	--
SHMW-09I	35.0 - 45.0	--	--	--	0	--	0	--	0	--	--	--	--	--	--	--	--	--	--
SHMW-10S	5.0 - 15.0	0	0	0	0	0	0	0	0	0	0	0	0	0	0	0	1	0	3
SHMW-10I	35.5 - 45.5	--	--	--	0	--	0	--	0	--	--	--	0	--	--	--	0	--	--
SHMW-11S	3.5 - 13.5	0	0	0	0	0	0	2	0	0	0	0	0	0	0	2	4	6	0
SHMW-11I	35.0 - 45.0	--	--	--	0	--	0	--	0	--	--	--	0	--	--	--	0	--	--
SHMW-12S	1.5 - 6.5	9	137	259	280	0	332	4	216	177	585	3	0	0	584	739	513	154	361
SHMW-12I	35.0 - 45.0	--	--	--	0	--	--	--	0	--	--	--	0	--	--	--	2	--	--
SHMW-13S	1.5 - 6.5	0	0	0	0	0	0	0	0	0	0	0	0	0	0	3	2	2	0
SHMW-13I	35.0 - 45.0	--	--	--	0	--	0	--	0	--	--	--	0	--	--	--	1	--	--

Table 5. Summary of Historical Total PAH Results
Sag Harbor Former MGP Site
Groundwater Monitoring Program - Q2 2017

Well No.	Screen Interval (feet)	Total PAH Concentrations (µg/L)																			
		Sampling Date																			
		2012				2013				2014				2015				2016			
		Sep	Dec	Mar	Jun	Sep	Dec	Mar	Jun	Sep	Dec	Mar	Jun	Sep	Dec	Mar	Jun	Sep	Dec		
MW-01	1.50 - 7.32	--	--	--	--	--	--	--	--	--	--	--	--	--	--	--	--	--	--		
MW-02	0.50 - 7.25	--	--	--	--	--	--	--	--	--	--	--	--	--	--	--	--	--	--		
MW-03	2.17 - 10.17	--	--	--	--	--	--	--	--	--	--	--	--	--	--	--	--	--	--		
MW-04	1.25 - 6.81	--	--	--	--	--	--	--	--	--	--	--	--	--	--	--	--	--	--		
MW-05	2.46 - 7.46	--	--	--	--	--	--	--	--	--	--	--	--	--	--	--	--	--	--		
MW-06	2.47 - 7.47	--	--	--	--	--	--	--	--	--	--	--	--	--	--	--	--	--	--		
SHMW-01S/01SR	1.0 - 6.0	0	0	8	0	0	0	67	--	0	--	--	--	--	--	--	--	0	--		
SHMW-01I/01IR	35.0 - 45.0	--	0	--	--	--	0	--	--	--	--	--	--	--	--	--	--	--	--		
SHMW-01D	65.0 - 75.0	--	0	--	--	--	0	--	--	--	--	--	--	--	--	--	--	--	--		
SHMW-02S	1.0 - 6.0	0	0	5	0	0	0	0	--	0	--	--	--	23	--	--	--	0	--		
SHMW-02I/02IR	35.0 - 45.0	--	56	--	--	--	245	--	--	11	--	--	--	25	--	--	--	--	--		
SHMW-02D/02DR	65.0 - 75.0	--	0	--	--	--	0	--	--	--	--	--	--	--	--	--	--	--	--		
SHMW-03S	2.0 - 12.0	22	2	23	14	16	6	5	--	3	--	--	--	16	--	--	--	18	--		
SHMW-03I	35.0 - 45.0	--	0	--	--	--	4	--	--	0	--	--	--	0	--	--	--	--	0		
SHMW-04S/04SR	2.0 - 12.0	1,195	639	402	100	1,875	1,916	190	523	1,637	309	571	551	886	112	359	948	808	232		
SHMW-04I	35.0 - 45.0	--	--	--	--	--	--	--	--	--	--	--	--	--	--	--	--	--	--		
SHMW-05S/05SR	2.0 - 12.0	420	20	107	175	155	291	171	153	367	121	94	94	208	308	106	184	178	146		
SHMW-05I/05IR	35.0 - 45.0	--	0	--	--	--	0	--	--	0	--	--	--	0	--	--	--	--	0		
SHMW-06S	2.0 - 6.0	--	--	--	--	--	--	--	--	--	--	--	--	--	--	--	--	--	--		
SHMW-06I	35.0 - 45.0	--	--	--	--	--	--	--	--	--	--	--	--	--	--	--	--	--	--		
SHMW-07S/07SR	1.0 - 11.0	4,342	419	2,620	950	4,030	1,381	1733	5945	12,876	904	0	14,332	11,494	3,943	745	5,132	--	2,286		
SHMW-07I/07IR	35.0 - 45.0	--	0	--	--	--	1	--	--	--	--	--	--	--	--	--	--	--	--		
SHMW-08S	1.0 - 7.0	113	182	95	151	180	148	147	174	250	160	116	213	140	157	132	161	153	146		
SHMW-08I	35.0 - 45.0	--	0	--	--	--	0	--	--	0	--	--	--	0	--	--	--	--	0		
SHMW-09S	2.0 - 12.0	787	690	721	575	603	211	560	832	1,315	360	529	909	121	107	373	673	317	363		
SHMW-09I	35.0 - 45.0	0	0	--	--	--	2	--	--	2	--	--	--	3	--	--	--	0	3		
SHMW-10S	5.0 - 15.0	0	0	0	0	0	1	0	--	0	--	--	--	0	--	--	--	--	--		
SHMW-10I	35.5 - 45.5	--	0	--	--	--	0	--	--	--	--	--	--	--	--	--	--	--	--		
SHMW-11S	3.5 - 13.5	0	2	1	0	7	16	1	0	1	201	2	1	5	3	0	1	6	--		
SHMW-11I	35.0 - 45.0	--	0	--	--	--	1	--	--	--	--	--	--	--	--	--	--	--	--		
SHMW-12S	1.5 - 6.5	217	104	62	410	604	133	0	353	493	247	76	523	502	317	227	670	601	312		
SHMW-12I	35.0 - 45.0	--	0	--	--	--	0	--	--	--	--	--	--	--	--	--	--	--	--		
SHMW-13S	1.5 - 6.5	0	0	0	0	0	0	0	--	1	--	--	--	0	--	--	--	--	--		
SHMW-13I	35.0 - 45.0	--	0	--	--	--	0	--	--	--	--	--	--	--	--	--	--	--	--		

Table 5. Summary of Historical Total PAH Results
Sag Harbor Former MGP Site
Groundwater Monitoring Program - Q2 2017

Well No.	Screen Interval (feet)	Total PAH Concentrations (µg/L)				
		Sampling Date		Min	Max	Mean
		2017				
		Mar	May			
MW-01	1.50 - 7.32	--	--	0	4,906	380
MW-02	0.50 - 7.25	--	--	0	25,167	6,235
MW-03	2.17 - 10.17	--	--	92	7,034	2,352
MW-04	1.25 - 6.81	--	--	0	3,612	304
MW-05	2.46 - 7.46	--	--	101	431,600	80,149
MW-06	2.47 - 7.47	--	--	0	5,416	420
SHMW-01S/01SR	1.0 - 6.0	--	--	0	4,147	740
SHMW-01I/01IR	35.0 - 45.0	--	--	0	32	4
SHMW-01D	65.0 - 75.0	--	--	0	0	0
SHMW-02S	1.0 - 6.0	--	--	0	23	2
SHMW-02I/02IR	35.0 - 45.0	--	--	0	580,200	22,393
SHMW-02D/02DR	65.0 - 75.0	--	--	0	308	49
SHMW-03S	2.0 - 12.0	--	--	0	430	63
SHMW-03I	35.0 - 45.0	--	--	0	320	20
SHMW-04S/04SR	2.0 - 12.0	68	170	0	6,669	2,108
SHMW-04I	35.0 - 45.0	--	--	0	18	3
SHMW-05S/05SR	2.0 - 12.0	171	107	0	420	120
SHMW-05I/05IR	35.0 - 45.0	--	--	0	17	1
SHMW-06S	2.0 - 6.0	--	--	0	5,848	2,690
SHMW-06I	35.0 - 45.0	--	--	0	2	0
SHMW-07S/07SR	1.0 - 11.0	--	--	0	14,332	3,420
SHMW-07I/07IR	35.0 - 45.0	--	--	0	2,212	222
SHMW-08S	1.0 - 7.0	141	28	3	250	104
SHMW-08I	35.0 - 45.0	--	--	0	13	1
SHMW-09S	2.0 - 12.0	297	37	0	2,737	783
SHMW-09I	35.0 - 45.0	0	0	0	3	1
SHMW-10S	5.0 - 15.0	--	--	0	22	1
SHMW-10I	35.5 - 45.5	--	--	0	0	0
SHMW-11S	3.5 - 13.5	--	--	0	201	9
SHMW-11I	35.0 - 45.0	--	--	0	4	0
SHMW-12S	1.5 - 6.5	361	532	0	739	278
SHMW-12I	35.0 - 45.0	--	--	0	20	2
SHMW-13S	1.5 - 6.5	--	--	0	3	0
SHMW-13I	35.0 - 45.0	--	--	0	1	0

NOTES:

-- not analyzed or not applicable

µg/L - micrograms per liter

PAH - polycyclic aromatic hydrocarbons

Figures



SOURCE:

Map created with TOPO!® ©2001 National Geographic (www.nationalgeographic.com/topo)



Sag Harbor Former MGP Site
Sag Harbor, New York

nationalgrid

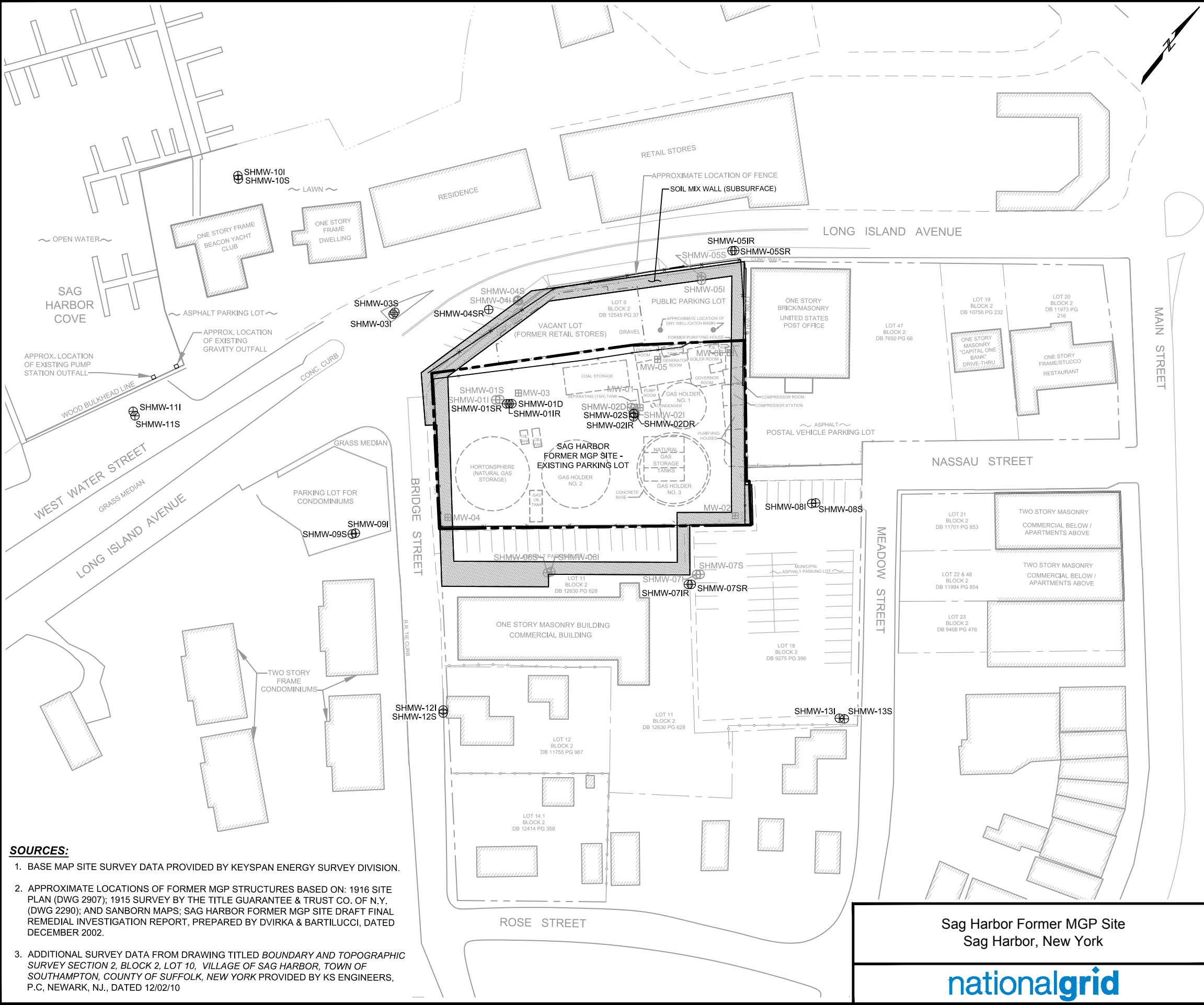


SITE LOCATION MAP

Project 093190

August 2017

Fig. 1



LEGEND

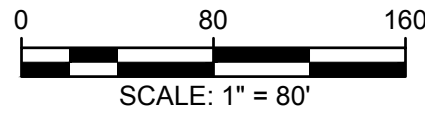
APPROXIMATE LOCATION OF FORMER MGP STRUCTURE

LOCATION OF EXISTING STRUCTURE

SHMW-05S

SHMW-03S

- SOURCES:**
1. BASE MAP SITE SURVEY DATA PROVIDED BY KEYSpan ENERGY SURVEY DIVISION.
 2. APPROXIMATE LOCATIONS OF FORMER MGP STRUCTURES BASED ON: 1916 SITE PLAN (DWG 2907); 1915 SURVEY BY THE TITLE GUARANTEE & TRUST CO. OF N.Y. (DWG 2290); AND SANBORN MAPS; SAG HARBOR FORMER MGP SITE DRAFT FINAL REMEDIAL INVESTIGATION REPORT, PREPARED BY DVIRKA & BARTILUCCI, DATED DECEMBER 2002.
 3. ADDITIONAL SURVEY DATA FROM DRAWING TITLED *BOUNDARY AND TOPOGRAPHIC SURVEY SECTION 2, BLOCK 2, LOT 10, VILLAGE OF SAG HARBOR, TOWN OF SOUTHAMPTON, COUNTY OF SUFFOLK, NEW YORK* PROVIDED BY KS ENGINEERS, P.C, NEWARK, NJ., DATED 12/02/10



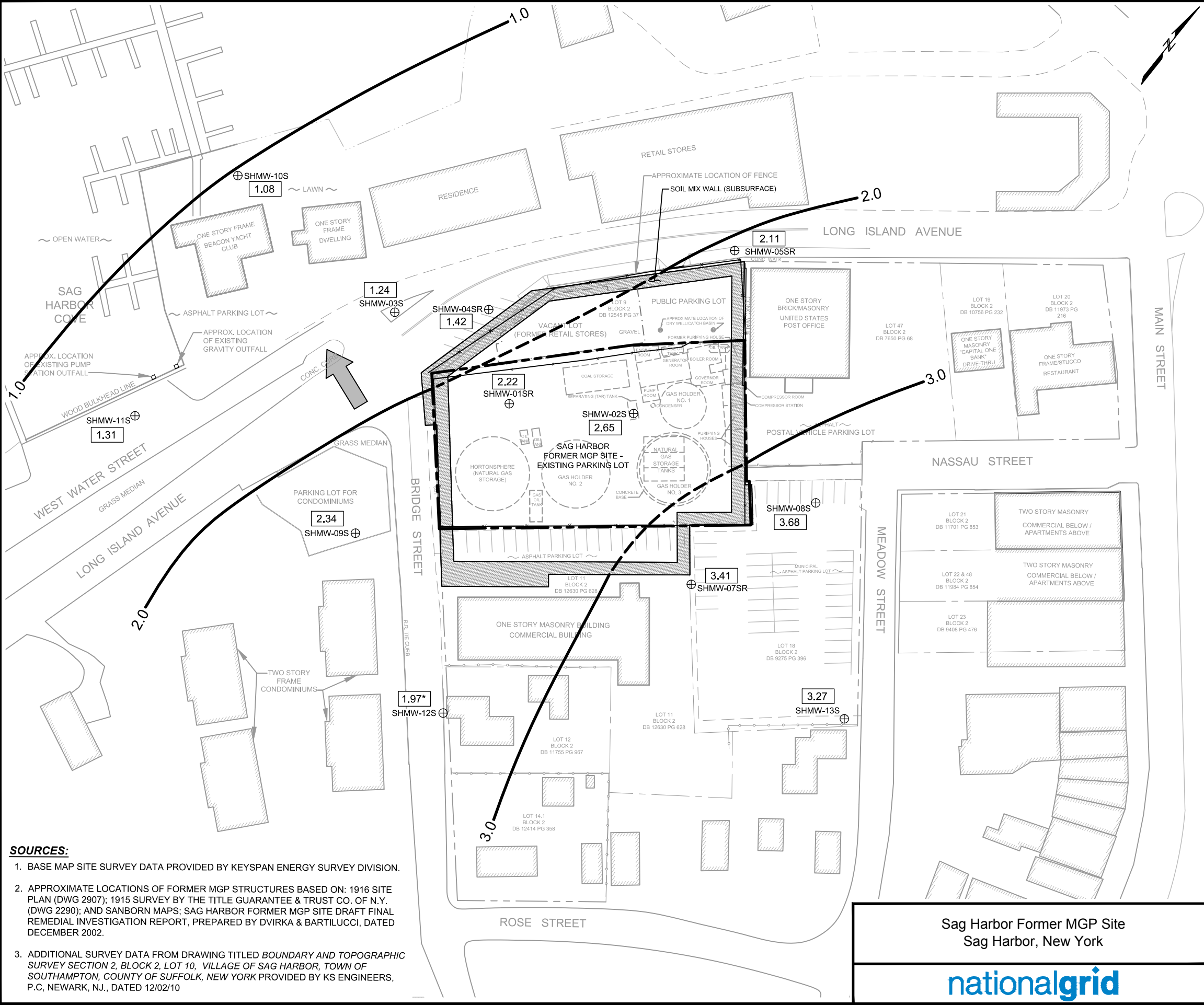
Sag Harbor Former MGP Site
Sag Harbor, New York

MONITORING WELL
LOCATION MAP

Project 093190

August 2017

Fig. 2



LEGEND

APPROXIMATE LOCATION OF FORMER MGP STRUCTURE

LOCATION OF EXISTING STRUCTURE

SHMW-05S

SHMW-03S

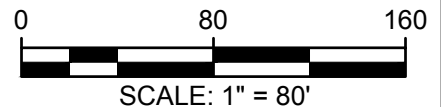
1.08

1.97*

2.0

2.0

- SOURCES:**
1. BASE MAP SITE SURVEY DATA PROVIDED BY KEYSpan ENERGY SURVEY DIVISION.
 2. APPROXIMATE LOCATIONS OF FORMER MGP STRUCTURES BASED ON: 1916 SITE PLAN (DWG 2907); 1915 SURVEY BY THE TITLE GUARANTEE & TRUST CO. OF N.Y. (DWG 2290); AND SANBORN MAPS; SAG HARBOR FORMER MGP SITE DRAFT FINAL REMEDIAL INVESTIGATION REPORT, PREPARED BY DVIRKA & BARTILUCCI, DATED DECEMBER 2002.
 3. ADDITIONAL SURVEY DATA FROM DRAWING TITLED *BOUNDARY AND TOPOGRAPHIC SURVEY SECTION 2, BLOCK 2, LOT 10, VILLAGE OF SAG HARBOR, TOWN OF SOUTHAMPTON, COUNTY OF SUFFOLK, NEW YORK* PROVIDED BY KS ENGINEERS, P.C, NEWARK, NJ., DATED 12/02/10



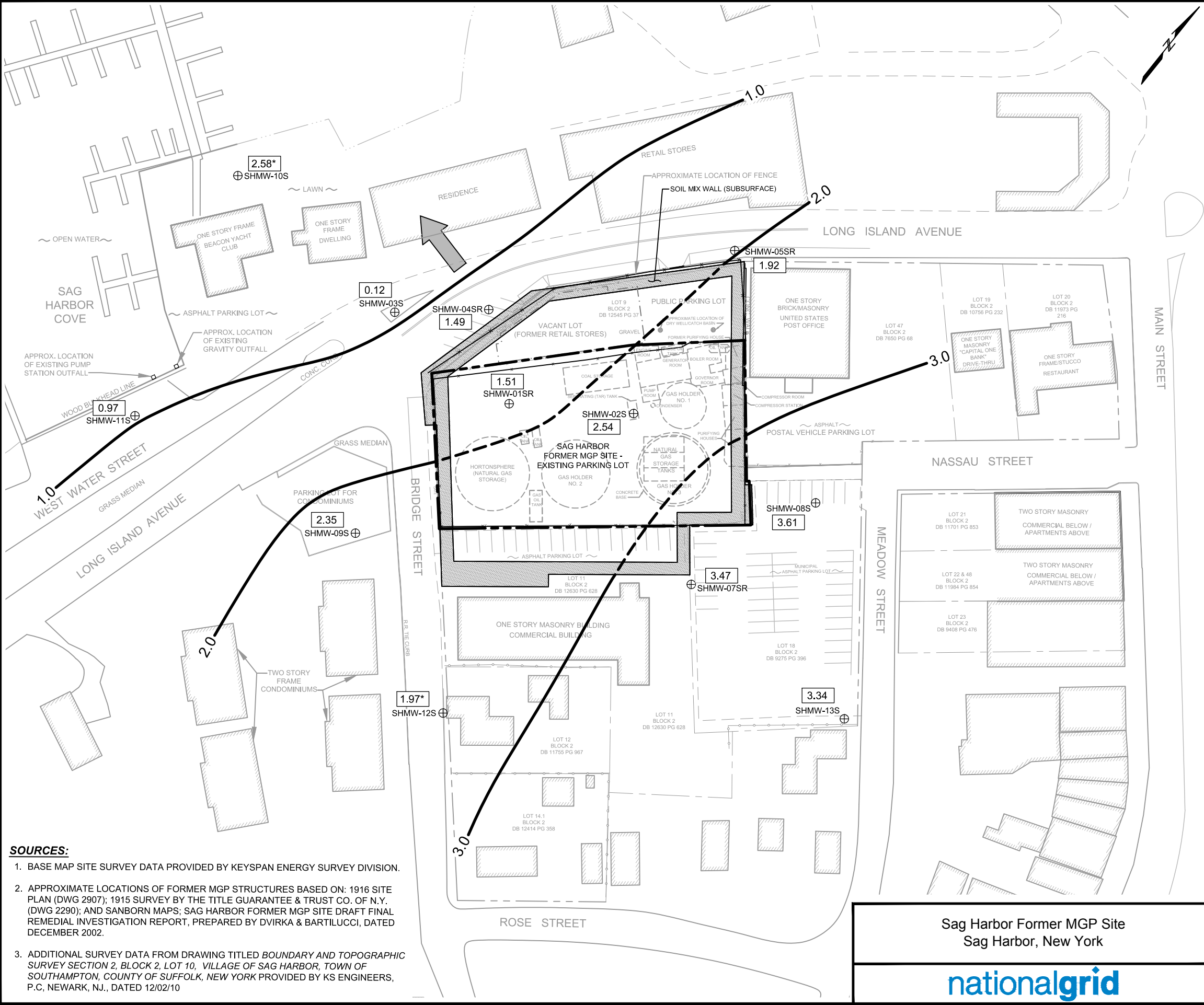
Sag Harbor Former MGP Site
Sag Harbor, New York

SHALLOW GROUNDWATER
CONTOURS - HIGH TIDE
5/15/2017

Project 093190

August 2017

Fig. 3



LEGEND

APPROXIMATE LOCATION OF FORMER MGP STRUCTURE

LOCATION OF EXISTING STRUCTURE

CURRENT SITE BOUNDARY

ADJACENT SITE BOUNDARY

CHAIN-LINK FENCE

STOCKADE FENCE

SHMW-05S

FORMER MONITORING WELL (WELL ABANDONED OR DESTROYED)

SHMW-03S

MONITORING WELL LOCATION

0.12

GROUNDWATER ELEVATION IN FEET

2.58*

MEASUREMENT NOT USED TO GENERATE CONTOURS

2.0

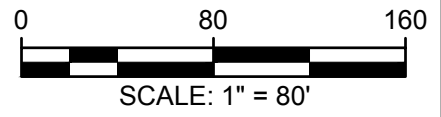
GROUNDWATER CONTOUR (FT)

2.0

GROUNDWATER CONTOUR (INFERRED)

APPROXIMATE GROUNDWATER FLOW DIRECTION

- SOURCES:**
1. BASE MAP SITE SURVEY DATA PROVIDED BY KEYSpan ENERGY SURVEY DIVISION.
 2. APPROXIMATE LOCATIONS OF FORMER MGP STRUCTURES BASED ON: 1916 SITE PLAN (DWG 2907); 1915 SURVEY BY THE TITLE GUARANTEE & TRUST CO. OF N.Y. (DWG 2290); AND SANBORN MAPS; SAG HARBOR FORMER MGP SITE DRAFT FINAL REMEDIAL INVESTIGATION REPORT, PREPARED BY DVIRKA & BARTILUCCI, DATED DECEMBER 2002.
 3. ADDITIONAL SURVEY DATA FROM DRAWING TITLED *BOUNDARY AND TOPOGRAPHIC SURVEY SECTION 2, BLOCK 2, LOT 10, VILLAGE OF SAG HARBOR, TOWN OF SOUTHAMPTON, COUNTY OF SUFFOLK, NEW YORK* PROVIDED BY KS ENGINEERS, P.C, NEWARK, NJ., DATED 12/02/10



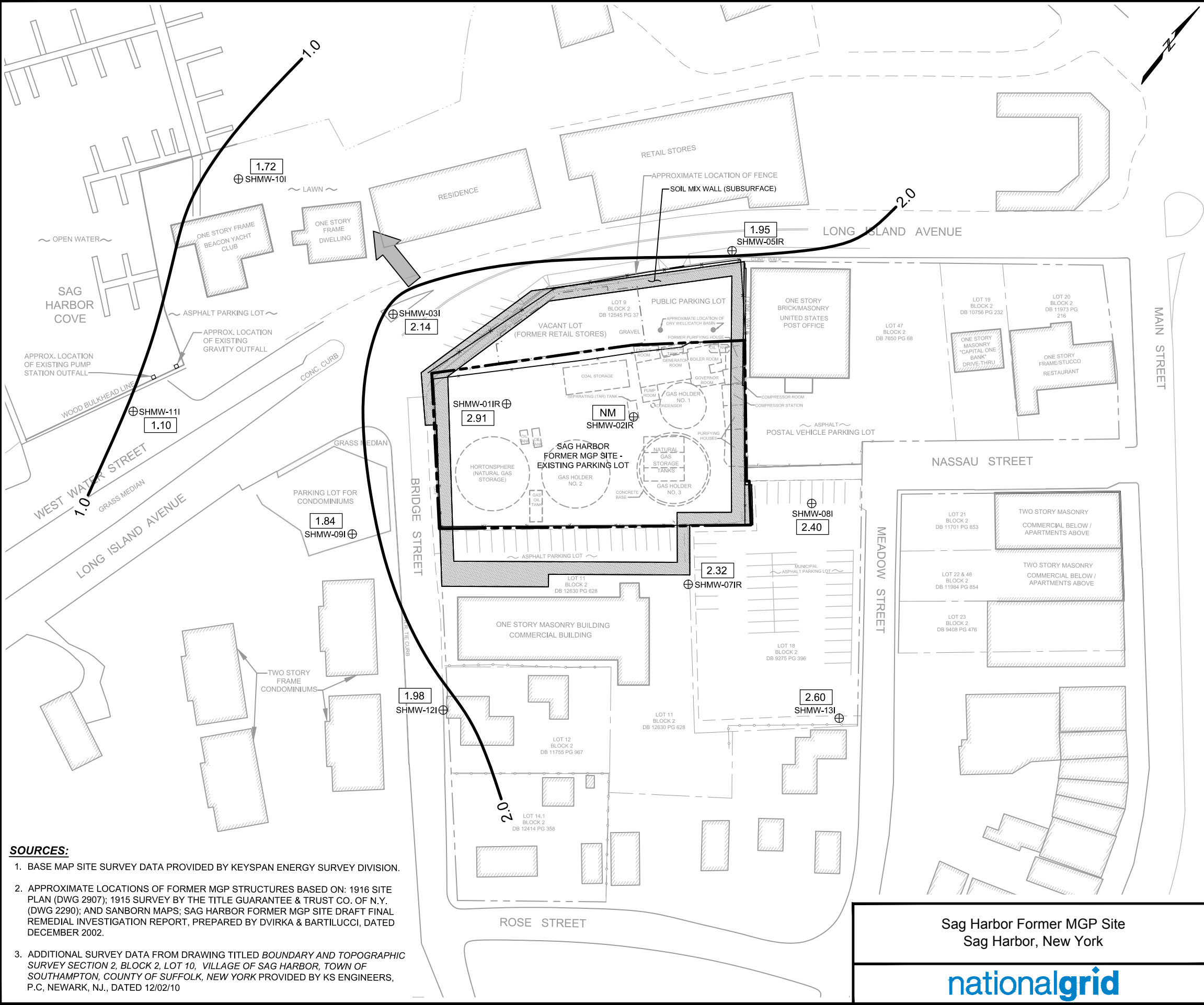
Sag Harbor Former MGP Site
Sag Harbor, New York

SHALLOW GROUNDWATER
CONTOURS - LOW TIDE
5/15/2017

Project 093190

August 2017

Fig. 4



LEGEND

--- APPROXIMATE LOCATION OF FORMER MGP STRUCTURE

▨ LOCATION OF EXISTING STRUCTURE

--- CURRENT SITE BOUNDARY

--- ADJACENT SITE BOUNDARY

--- CHAIN-LINK FENCE

--- STOCKADE FENCE

SHMW-02I ⊕ FORMER MONITORING WELL (WELL ABANDONED OR DESTROYED)

SHMW-03I ⊕ MONITORING WELL LOCATION

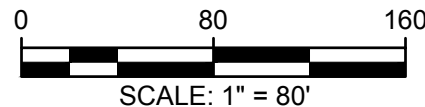
1.72 GROUNDWATER ELEVATION IN FEET

NM WELL NOT MEASURED

2.0 GROUNDWATER CONTOUR (FT, INFERRED)

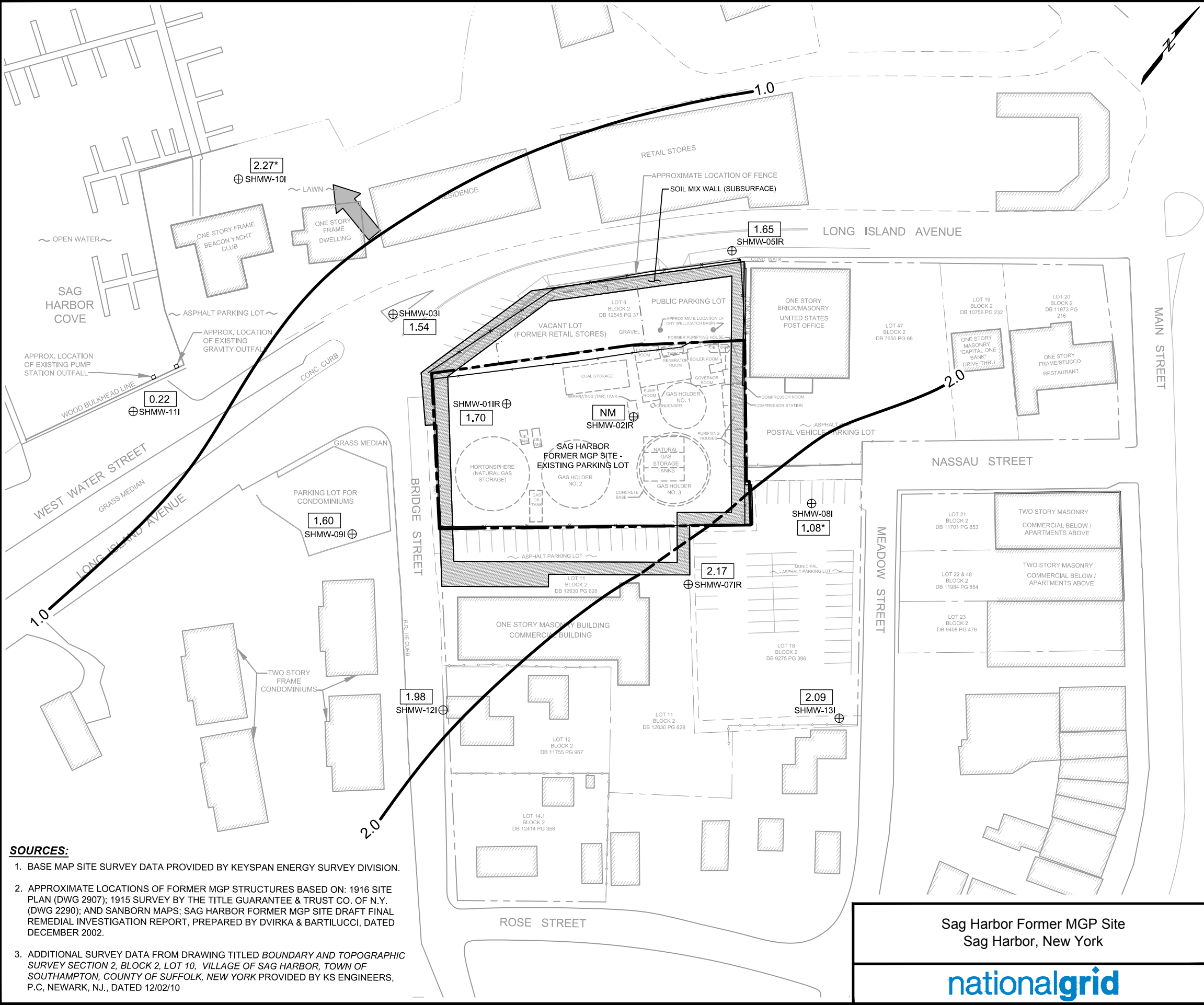
← APPROXIMATE GROUNDWATER FLOW DIRECTION

- SOURCES:**
1. BASE MAP SITE SURVEY DATA PROVIDED BY KEYSpan ENERGY SURVEY DIVISION.
 2. APPROXIMATE LOCATIONS OF FORMER MGP STRUCTURES BASED ON: 1916 SITE PLAN (DWG 2907); 1915 SURVEY BY THE TITLE GUARANTEE & TRUST CO. OF N.Y. (DWG 2290); AND SANBORN MAPS; SAG HARBOR FORMER MGP SITE DRAFT FINAL REMEDIAL INVESTIGATION REPORT, PREPARED BY DVIRKA & BARTILUCCI, DATED DECEMBER 2002.
 3. ADDITIONAL SURVEY DATA FROM DRAWING TITLED *BOUNDARY AND TOPOGRAPHIC SURVEY SECTION 2, BLOCK 2, LOT 10, VILLAGE OF SAG HARBOR, TOWN OF SOUTHAMPTON, COUNTY OF SUFFOLK, NEW YORK* PROVIDED BY KS ENGINEERS, P.C, NEWARK, NJ., DATED 12/02/10



Sag Harbor Former MGP Site Sag Harbor, New York 		INTERMEDIATE GROUNDWATER CONTOURS HIGH TIDE 5/15/2017	
		Project 093190	August 2017

Fig. 5



LEGEND

APPROXIMATE LOCATION OF FORMER MGP STRUCTURE

LOCATION OF EXISTING STRUCTURE

SHMW-02I

SHMW-03I

1.54

NM

2.27*

1.0

1.0

- SOURCES:**
1. BASE MAP SITE SURVEY DATA PROVIDED BY KEYSpan ENERGY SURVEY DIVISION.
 2. APPROXIMATE LOCATIONS OF FORMER MGP STRUCTURES BASED ON: 1916 SITE PLAN (DWG 2907); 1915 SURVEY BY THE TITLE GUARANTEE & TRUST CO. OF N.Y. (DWG 2290); AND SANBORN MAPS; SAG HARBOR FORMER MGP SITE DRAFT FINAL REMEDIAL INVESTIGATION REPORT, PREPARED BY DVIRKA & BARTILUCCI, DATED DECEMBER 2002.
 3. ADDITIONAL SURVEY DATA FROM DRAWING TITLED *BOUNDARY AND TOPOGRAPHIC SURVEY SECTION 2, BLOCK 2, LOT 10, VILLAGE OF SAG HARBOR, TOWN OF SOUTHAMPTON, COUNTY OF SUFFOLK, NEW YORK* PROVIDED BY KS ENGINEERS, P.C, NEWARK, NJ., DATED 12/02/10

Sag Harbor Former MGP Site
Sag Harbor, New York

INTERMEDIATE
GROUNDWATER CONTOURS
LOW TIDE
5/15/2017

Project 093190

August 2017

Fig. 6